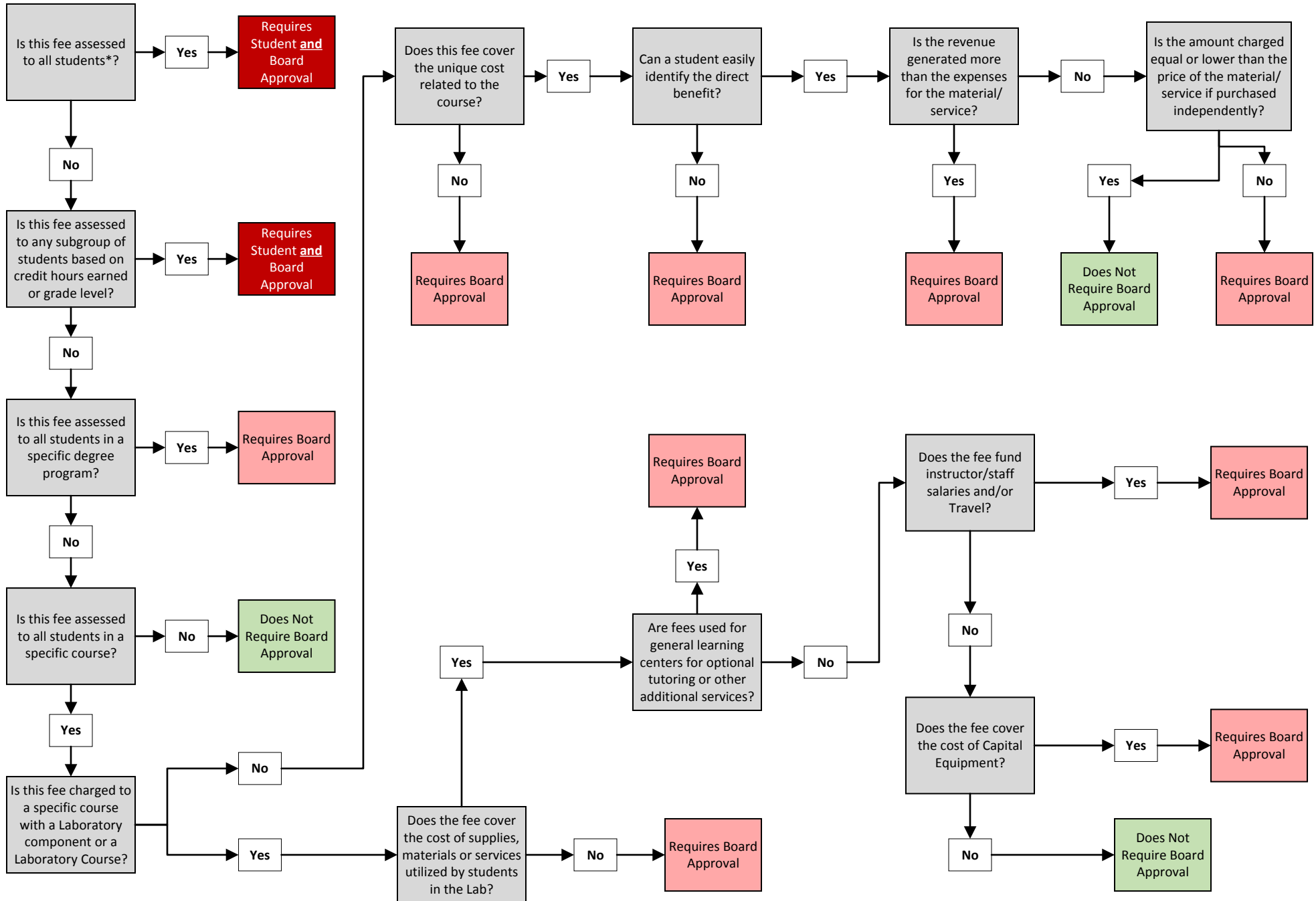


Elective Fees and Special Charges (Miscellaneous Fees)

Does The Fee Being Charged Require Additional Approval?



*NOTE: "All students" is defined as students currently enrolled in instructional courses and can exclude distance learning/online students.

More information can be found in Section 24 of the Board of Regents Business Procedures Manual: http://www.usg.edu/business_procedures_manual/section24/

If you need this document in another format, please email budget.office@ung.edu or call 706-867-2837.