



NEW STUDENT ORIENTATION



Michael P. Shannon, Ph.D.
President

MESSAGE FROM THE PRESIDENT

Welcome New Nighthawks!

It is with great pleasure and excitement that I welcome you to the University of North Georgia family! Whether you are beginning your academic journey as a first-year student or transferring to our university, you are about to embark on an enriching and transformative experience.

As president of this incredible university, I am committed to fostering an engaging environment where every student can thrive academically, personally, and professionally. UNG provides a high-impact, co-curricular, accessible, and outcomes-based transformative experience that prepares you for success in an ever-evolving world.

At UNG, you will find a supportive community of faculty, staff, and fellow students who are eager to help you achieve your goals. With our diverse array of academic programs, you will have access to the resources and opportunities necessary to excel in your chosen field.

I encourage you to take full advantage of everything UNG has to offer. Get involved in campus organizations, participate in research projects, and take advantage of internships and study abroad opportunities. Your time at UNG is not just about earning a degree; it is about discovering your passions, honing your skills, and finding your purpose.

As you embark on this new chapter of your life, remember that you are not alone. The faculty and staff at UNG are here to support you every step of the way.

Once again, welcome to the University of North Georgia. I am confident that your time here will be both rewarding and memorable. I look forward to watching you grow and succeed as a member of our university community.

Go Nighthawks!



UNIVERSITY OF NORTH GEORGIA

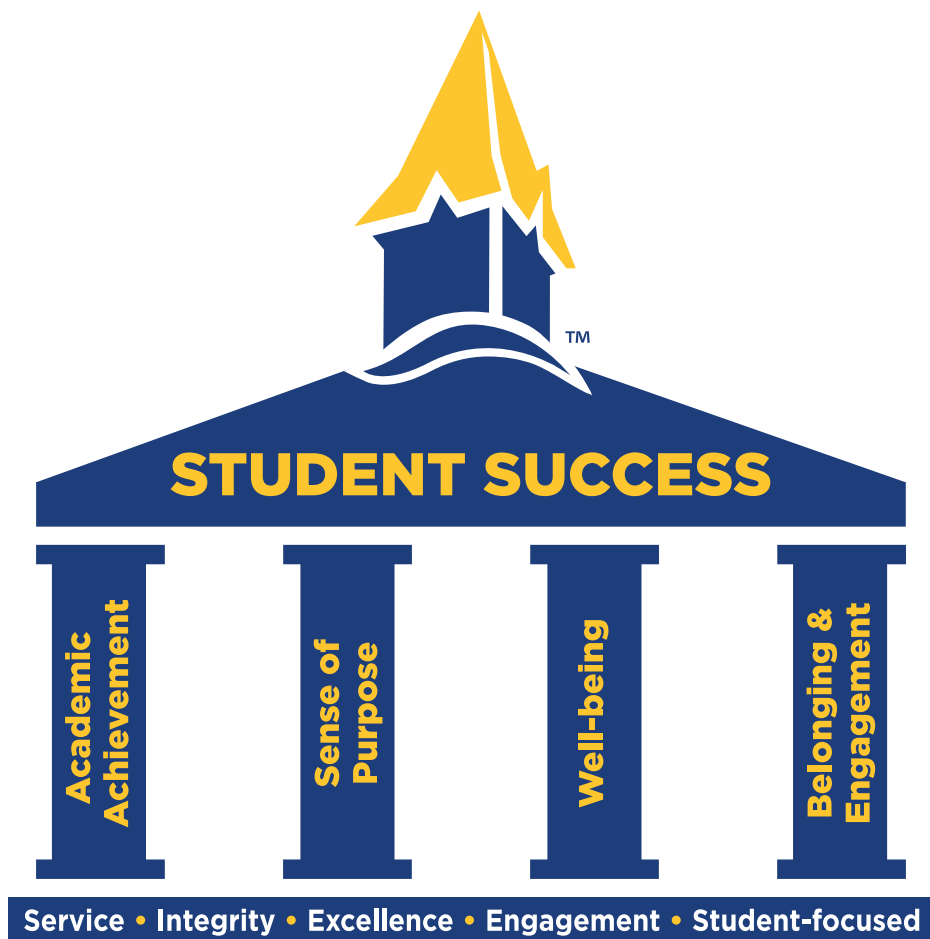
UNG IS DESIGNATED AS A STATE LEADERSHIP INSTITUTION
AND AS THE MILITARY COLLEGE OF GEORGIA®.

OUR MISSION

The University of North Georgia, a regional multi-campus institution and premier senior military college, provides a culture of academic excellence in a student-focused environment that includes quality education, service, research, and creativity. This is accomplished through broad access to comprehensive academic and co-curricular programs that develop students into leaders for a diverse and global society. The University of North Georgia is a University System of Georgia leadership institution and is the Military College of Georgia.

OUR CULTURE

The University of North Georgia is a community of students, faculty, staff, alumni, and friends who are committed to educational excellence, leadership development, and community engagement. UNG's institutional values **excellence, student-focus, integrity, engagement, and service** are essential to our identity and mission of preparing students to become leaders in a diverse and global society. UNG's culture reinforces that commitment and our role as responsible stewards of the resources and responsibilities with which we are entrusted.



Students First. Always.

The University of North Georgia is committed to prioritizing student learning above all else, encapsulated by our shared value, "Students First. Always." The theory of challenge and support emphasizes the balance between challenging students to grow and providing them with the necessary support to succeed. This mantra is not just a slogan; it is the core of UNG through prioritizing student learning above all else.

The pursuit of academic excellence, leadership development, and career readiness is at the heart of UNG's educational philosophy. UNG recognizes that a student's journey through higher education is not solely defined by academic achievement. To provide a comprehensive framework for student success, UNG has established four interconnected pillars: **Academic Achievement, Sense of Purpose, Well-being, and Belonging and Engagement**. These pillars collectively form the foundation upon which UNG challenges and supports students.

The four pillars are intricately interconnected, mutually reinforcing, and create a robust support structure for students' educational journeys. When engaged fully, these four pillars may result in academic achievement, greater life and career satisfaction, stronger resiliency and leadership capacity, and a greater sense of community and support. UNG is dedicated to supporting students to help them achieve their greatest self by aligning our practices with these four pillars throughout each student's journey.



First-Year
Students



Transfer
Students



Adult Learner
Students



Veteran & Military
Connected Students



Returning
Students



Family & Supporter
Programs

Pursuing your degree is one of the most challenging, yet exciting and rewarding things you'll ever do. You're bound to have lots of questions, so our orientation program is designed to introduce you to all the essential information you'll need to know as you prepare for life as a UNG Nighthawk. This guidebook contains important details meant to support the presentations you'll hear at orientation, so be sure to keep it for future reference.

Our office is grounded in three themes: **Connection, Preparation, Navigation,** and **Purpose.** Everything provided in this guidebook, interactions you will have during orientation, and experiences we provide throughout the year, are all focused on helping you in these areas. We hope you connect with each other and the larger UNG Community. We believe orientation helps Nighthawks prepare for the rigor of their classes and to be positive role models for others during their time at UNG and in their careers after college. We also want to make sure all students have the appropriate knowledge to navigate our multiple campuses, the student resources available, and the departments and offices dedicated to student success. We hope that throughout your time at UNG, you not only discover your academic and professional goals but also find a deeper sense of purpose that guides your journey, both during your time here and beyond.

When you leave orientation, we hope you remember this: each of the UNG campuses has an extensive network of resources that can help you transition smoothly, and we want you to use them. Whatever issues you face—whether in class or out — we're always happy to help. Be proactive in solving problems and let us know when you need us! Never be afraid to ask questions and be sure to collaborate with faculty, staff, and classmates to maximize your learning.

Make the most of your time at orientation!

Your Orientation Leadership Team

706-864-1010
SOS@ung.edu

TABLE OF CONTENTS



12

TUITION & FEES

Offers a quick review of the financial aid process as well as how to pay your tuition and fee balance.



18

GUIDE TO CAMPUS BASICS

Bookstore, Card Services, Dining Services, Information Technology Services, Student Email, Parking Services, UNG Police Department.



40

ACADEMIC INFORMATION

26 ACADEMIC SUCCESS

Learn about the different academic support resources such as the UNG Library, Tutoring Services and Supplemental Instruction to help you work smarter, not harder.

29 MAXIMIZE YOUR LEARNING

Preview different university departments such as the Center for Global Engagement and the Center for Undergraduate Research and Creative Activities to help enhance your academic pursuits.

32 STUDENT SERVICES

Learn about the Division of Student Engagement and Success and the many support services provided to aid in your transition to university life.

ACADEMIC INFORMATION

40 Review UNG's academic programs, academic calendar, and core curriculum.

54 SCHEDULING YOUR CLASSES

Review how to find your registration date in Banner and how to choose the right number of classes to help you obtain your degree.

64 UNG DEFINITIONS & ACRONYMS

68 DIRECTORY



VALUES & EXPECTATIONS

STUDENTS ARE EXPECTED TO BE MODEL CITIZENS WHOSE ACTIONS AND BEHAVIORS IN AND OUT OF THE CLASSROOM REFLECT THE CORE VALUES OF THE UNIVERSITY: EXCELLENCE, STUDENT-FOCUS, INTEGRITY, ENGAGEMENT, AND SERVICE.

| HONOR CODE

ON MY HONOR, I WILL NOT LIE, CHEAT, STEAL, PLAGIARIZE, EVADE THE TRUTH, CONSPIRE TO DECEIVE, OR TOLERATE THOSE WHO DO.



UNDERSTANDING FERPA

THE LAW THAT GOVERNS HOW WE SHARE THE INFORMATION IN YOUR ACADEMIC RECORD

The **Family Educational Rights and Privacy Act (FERPA)** affords students three basic rights:

1. to review their education records;
2. to seek to amend incorrect education records; and
3. to have some control over the disclosure of their education records.

WHAT DOES IT MEAN?

Your privacy is our priority! And that means UNG personnel will not discuss the information in your education record to any third party without your permission, including parents and family members. (Of course, some extenuating circumstances create exceptions to this rule.)

Remember, we cannot disclose the majority of your university-related information without your official "Authorization to Release/Discuss Education Records" form on file.

DIRECTORY INFORMATION

FERPA allows UNG to release "Directory Information" about each student, unless you have filed a "Request for Non-Disclosure" form with the Registrar's Office. Directory information includes the following:

- Student Name
- Address & Telephone Numbers
- Major, Minor, and/or Concentration
- Enrollment Status
- Dates of Attendance
- Anticipated Graduation Date
- Degree(s) Pursued or Awarded
- Honors and Awards Received
- Participation in UNG-Sponsored Activities and Sports
- Class Standing

"Directory Information" does *not* include GPA, grades, country of citizenship, race/ethnicity, gender, schedule, student identification number, or social security number.

MAINTAINING CONFIDENTIALITY

Students may request that their directory information be marked

'Confidential,' meaning UNG may not disclose it to parents or any third party without prior written consent. Students may request this non-disclosure by submitting a "Request for Non-Disclosure of Directory Information" form to the Registrar's Office.

AUTHORIZATION OF DISCLOSURE

If students would like to name specific people with whom we can discuss their education records, they can make a request on the UNG Family Network! Once the request is made, students will need to approve it through the link in their email. Students will have the ability to approve/deny any portion of their records requested to be shared.

Questions concerning the law and the University's procedures regarding release of academic information may be directed to the University Registrar's Office: registrar@ung.edu.

THE CHANGING PARENT/ CHILD RELATIONSHIP

ARE YOU PREPARED FOR THE NEW EXPERIENCES AND PRESSURES COLLEGE WILL BRING?

The relationships between parents and children inevitably change once students enter college. Because change is tough, it's best to prepare for the transition early. Strong emotions will almost certainly emerge; however, open communication, mutual respect, and shared understandings can preserve healthy relationships.

Here are some questions to help you think about this important transition and start a conversation about what's to come. (Obviously, not all questions will apply to every student, so pick and choose those that work best for your situation.)

AFTER ORIENTATION

Family Members/Supporters Ask:

- What are you most confident about? Are you anxious? Excited?
- What will you do if you begin to struggle in your classes? Which on-campus resources can you access?
- Of the resources described at orientation and in this guidebook, which ones do you think might be most helpful to you?
- What signs, behaviors, and habits do you typically exhibit when you're feeling stressed? What should we watch for?
- How much time will you devote to studying and homework? When and where?
- What out-of-class activities and programs are you interested in being involved in? What do you find appealing about them?

Students Ask:

- What should I expect about your rules and expectations for me when I am back at home on weekends or during breaks?
- What items am I expected to pay for myself—food, gas, books, clothes?

Both Ask:

- How often should we expect to talk to each other? What is too much vs. not enough?
- What are the expectations for having a job during the school year? (location, hours, pay, etc.) During the summers?

DURING THE SEMESTER

- What lessons have you learned about college and the academic environment? Anything you need to do differently?
- Who are your friends? Where do they live?
- What are the things others do that cause you frustration or stress? How are you handling these issues?
- Have you visited the resources that you believed would be helpful? Do you know where they are located on campus?
- What strategies have you developed to manage your time and study requirements?
- What activities/programs have you gotten involved in? What other things would you like to try?
- What are your holiday plans?



Join the
UNG Family Network!
<https://ung.campusesp.com>

A new way to stay involved with UNG!

The UNG Family Network is designed to provide the information you need when you need it. This resource will help current and future University of North Georgia families stay engaged and focused on what matters most: **your student's success.**

Scan the QR Code to sign up today!

UNG Success Hub!



TUTORING, WRITING CENTER, ACADEMIC COACHING & SUPPLEMENTAL INSTRUCTION!

Your one-stop for scheduling appointments and joining drop in sessions for tutoring, the writing center, academic coaching, and supplemental instruction!

BOOK AN APPOINTMENT OR JOIN A DROP IN SESSION HERE



TO ACCESS THE UNG SUCCESS HUB DOWNLOAD THE APP ON YOUR PHONE OR USE THE WEB VERSION

WEB BASED:

- Go to the [UNG Success Hub page](#) and log in with your UNG username and password.
- Click the plus sign in the lower right corner to see booking options for tutoring, the writing center and coaching.
- Select “Request a Tutor,” “Request a Writing Consultant” or “Request a Coach” and complete the form.
- For Supplemental Instruction, make sure “All SI Sessions” is checked on the left side to see available sessions.
- Click on an available block to see appointment details or join a drop-in session.

PHONE APP:

- Go to the app store for your device and download the app for Android ([Google Play](#)) or iPhone ([App Store](#)).
- Log in with your UNG username and password.
- Tap “Tutoring,” “Writing,” or “Coaching” across the bottom and complete the form.
- For Supplemental Instruction, click “SI” to see sessions available for your classes.
- Tap on an available block to see appointment details or join a drop-in session.



Student Health Insurance

ung.edu/dean-of-students/health-and-safety/student-health-insurance

Any student needing health insurance can visit the USG Student Health Insurance Program (SHIP) website to find out more information about this health insurance program. For more info visit:

WWW.UHCSR.COM/NORTHGEORGIA

*Students do not need insurance to visit UNG Student Health Services. Student Health Services covers a variety of services and any UNG student who has paid the Student Health Fee can utilize them at any time during the semester.

Student Checklists

Unsure of your next step? No worries, we have created a checklist to help guide you on your next steps now that you've attended Orientation. Select your checklist based on your student type.

UNG.EDU/Student-Orientation-Success/CHECKLISTS



PAYING YOUR TUITION & FEES

ESTIMATING HOW MUCH YOU'LL PAY IN TUITION AND FEES IS A CRUCIAL PART OF BUDGETING FOR COLLEGE.

Tuition and fees are calculated by campus per credit hour, so the number (and type) of classes on your schedule will determine the total cost of your bill. Keep in mind that tuition and fee estimates **do not** include the cost of textbooks, school supplies, room/board, transportation, etc., so you'll need to estimate those expenditures separately.

Check the link below for tuition and fee payment dates and deadlines.

<https://ung.edu/business-office/payment-deadlines.php>

FINANCIAL AID

FEDERAL SCHOOL CODE:

001585

University of North Georgia
Dahlonega, GA

(works for all campuses)



To be successful and stay on the road to graduation, always watch for emails for important updates and stay on track for success!



FREE APPLICATION FOR FEDERAL STUDENT AID (FAFSA)

UNG offers the complete slate of financial aid options for students, depending on their eligibility. To apply for **federal aid** (grants, loans, and work-study programs) and **state aid** (HOPE Scholarship, Zell Miller Scholarship, HOPE Grant, etc.), you must complete the FAFSA according to the term in which you wish to enroll.

Completing the FAFSA for the first time may take about an hour. You can ensure the process goes smoothly by gathering all the information you will need prior to starting. At minimum, to begin the process you will need the following information, as well as your parents' (if you are a dependent student):

- Prior-prior year federal income tax records (ex: 2025-2026 application uses 2023 tax records)
- Social Security Number/Alien Registration Number
- Asset information, such as savings, investments, CDs, etc.
- Federal Student Aid ID (FSA ID) for both student and parent (if dependent).

Your eligibility for aid may change from year-to-year, so **you must re-apply** for the FAFSA each academic year:

- **Fall 2025, Spring 2026, and Summer 2026=**
Complete 2025-2026 FAFSA

Monitor your Banner and UNG email accounts for details regarding your eligibility and award status.

PRIORITY DEADLINES

- **Fall Semester:** June 1st
- **Spring Semester:** November 1st
- **Summer Semester:** April 1st

Priority Deadline for Campus-Based Aid, such as Work-Study, FSEOG, & Scholarships: February 14th.

IMPORTANT: If you submit the FAFSA after the priority deadline, it may be necessary to pay tuition, fees, and book costs out-of-pocket and wait for reimbursement once eligible aid is available.

ung.edu/financial-aid

Questions? finaid@ung.edu
(Please include student's name and ID #)

FINANCIAL AID OVERVIEW



APPLY FOR FINANCIAL AID

Apply online—each academic year—using UNG's School Code:

- **001585** – “University of North Georgia Dahlonega, GA” (works for all campuses)
- **FAFSA** (all aid types) - <https://studentaid.gov>
- **HOPE, Zell Miller Scholarships** (only) - www.gafutures.org



CHECK FOR OUTSTANDING REQUIREMENTS

Log in to Banner to confirm that UNG has received all the supporting documents needed to evaluate your eligibility for aid. Log in to Banner > Click Student > Click the 4 white squares in the top left corner > Banner > Student > Click the Financial Aid link then choose Eligibility > Student Requirements. **Most common issues:** Is there an error on your application? Were you selected for verification? Do you have missing transcripts?



ACCEPT ALL OR SOME OF YOUR AWARD

In Banner, choose Financial Aid > Award > Award by Aid Year > Select Aid Year > Accept Award Offer. Using the drop-down box under “Accept Award,” choose “Decline” or “Accept” for each fund. If you don't want to accept the full amount offered, specify an exact partial amount in the box provided, and then click “Submit Decision.”



COMPLETE AWARD REQUIREMENTS

After accepting your award, be sure to complete all the requirements listed under “Unsatisfied Disbursement Requirements.” Hyperlinks for each required item are provided on the Accept Award page. (For example, loans require you to complete Entrance Loan Counseling and submit a Master Promissory Note.)



CONFIRM YOUR AID HAS DISBURSED

Log in to Banner and choose Student > Student Account > Student Invoice. Once your financial aid has been applied to your balance, it should show as a credit under “Term Credits and Payments.” If your invoice shows a positive amount under “Estimated Amount Due,” then you must pay the total balance due by the published payment deadline. If the amount is negative, you are expecting a refund.



KEEP YOUR FINANCIAL AID

In order to remain eligible for financial aid each semester, you must make “Satisfactory Academic Progress,” or SAP. In general, that means you must maintain an acceptable GPA (varies according to aid) and course completion rate (67%). You must also keep moving towards your degree or certificate within the time period determined by UNG. Details are available on the Financial Aid website.

IMPORTANT NOTE: Your financial aid refund will be available by the end of the 2nd week of the term only if you accepted your award and satisfied all outstanding requirements by the semester fee payment deadline. All financial aid refunds will be processed by the Business/Bursar Office through your refund preference. Don't forget to activate your preference or your refund may be delayed.

FINDING TUITION & FEE INFORMATION

Tuition and fee information is updated each academic year and is available for review on the UNG website—just click the “Tuition and Fees” link on the Current Student Resources webpage: www.ung.edu/landing/current-student-resources. Once on the page, you can follow the prompts in the Estimator tool. This page also includes information about mandatory fees, room and board rates (for Dahlonega), and other fee related information.

IMPORTANT: The Estimator tool provides a rough estimate only and does not include every fee that a student might pay such as lab course related fees or Corps of Cadet fees.

STUDENT INVOICES

UNG does not mail printed invoices, so it is your responsibility to monitor your tuition/fee balance in Banner. Login, then click Student > Student Account > Student Invoice > Continue > View Account Activity.

REFUNDS AND FINANCIAL AID DISBURSEMENT

In most cases, your tuition/fee refunds and excess financial aid disbursements will be issued to your BankMobile refund preference. Once you are registered for your courses, you can select this refund preference the next business day by going to www.ung.edu/business-office, clicking on “Selecting a Refund Preference,” and then following the prompts. You can select your preference to be an ACH transfer to a bank account of your choosing or to go to a BankMobile Vibe account which you will set up at the time that you choose that option.

TUITION PAYMENT PLANS

A limited number of tuition payment plans are available; however, you must enroll by the deadline in order to be eligible. The current maximum coverage of a payment plan is \$5,500.00 per term. Check the online Quick-Guide for details: <https://ung.edu/cost-aid/tuition/nelnet-quick-guide.php>. *Please note that while on a payment plan, all payments should be made through Nelnet and not UNG.

FALL 2025

last day to enroll online:	required down payment:	number of payments:	months of payment:	fee to enroll:
mid July	None	4	July - Oct	\$50
early Aug	25%	3	Aug - Oct	\$60
Last Day of Drop/Add	50%	2	Sept & Oct	\$70

Current Nelnet Payment Plan due dates can be found at mycollegepaymentplan.com/ung

Spring 2026

last day to enroll online:	required down payment:	number of payments:	months of payment:	fee to enroll:
mid Nov	None	4	Nov - Feb	\$50
early Dec	25%	3	Dec - Feb	\$60
early Jan	50%	2	Jan & Feb	\$70
Last Day of Drop/Add	50%	1	Feb Only	\$70

Current Nelnet Payment Plan due dates can be found at mycollegepaymentplan.com/ung

PAYMENT METHODS



ONLINE

Web Check or Credit Card
via your Banner account



IN PERSON

Cash, Check, or Money Order
in the Business Office (Dahlonega and Gainesville Only)



BY MAIL

Check or Money Order
with student id#

MAIL TO:
UNG Business Office
82 College Circle
Dahlonega, GA 30597

COST OF COLLEGE SCENARIO\$

Unfortunately, college isn't free. Have you thought about all of the ways in which your student might spend or save money while at UNG? Review these common scenarios with your student to make sure they are ready to navigate financial challenges!

Academics

Jill hasn't been attending class regularly each week, and her grades have started to slip. Jill is accustomed to being able to make up assignments and get by without needing to pay attention in class in high school, so she is met with an unexpected situation. Jill wants to avoid repeating the mistakes she's made already.

Facts on Jill:

- Jill takes 12 hours per semester
- Jill has made 5 "D"s
- Jill has withdrawn from 4 classes and changed her major once.
- Jill has failed to maintain Satisfactory Academic Progress.

True or False: FERPA, is a US law that restricts the university from providing students' grades, money owed, or other information to parents or guardians unless the student gives the university express permission.

Work

Jack has a job at the nearby outlet mall. He's having trouble balancing his time between his class/study schedule and the work schedule he needs to help pay his bills. Jack is considering dropping a class to pick up extra shifts.

Facts about Jack

- Jack works 4 shifts per week
- Jack commutes 30 miles round-trip per shift
- Jack spends \$120 per month in gas commuting
- Jack eats at the mall once per shift, avg. cost \$9 per meal
- Jack lives within walking distance of campus
- Jack has employment options closer to campus/home

True or False: In order to be eligible for a Federal Work-Study position, you must submit a FAFSA every year.

Cash around Campus

Nigel struggled to pay his semester bill in full and missed the payment deadline, which caused him to be dropped from all of his classes. Now, he not only has to pay a late fee for the courses he originally registered for, but he'll need to re-register during add/drop and hope he can get the classes he needs. He barely scrapes together the money he needs to re-enroll, but now he's really strapped for cash.

Facts about Nigel

- Nigel pays his tuition in full before the start of each term
- Nigel buys his books on campus at the UNG bookstore
- He usually buys a cup of coffee and a snack on campus each day
- Nigel doesn't have a meal plan, but still eats lunch on campus everyday

True or False: You can use your Financial Aid in the Barnes & Noble College bookstore, even before the money hits your account.

Social

Jessica is a rising sophomore at UNG. Over the course of her freshman year Jessica made a lot of new friends who were always inviting her to go shopping or go to dinner. Jessica also started dating a new partner this year who hasn't been helping out with the finances of the relationship.

Facts about Jessica:

- Jessica usually spends about \$400 every month shopping and eating out with her friends
- Jessica's friends have invited her to join their sorority
- Jessica and her partner go out twice a week, and Jessica always pays
- Jessica is considering taking out a private loan to be able to maintain her lifestyle

True or False: UNG's Student Money Management Center is the same thing as the Business Office.

Dining

Madison is a UNG junior who shares an affordable off-campus apartment with two roommates and one of her largest expenses each month is food. Madison often buys lunch on campus rather than going back to her apartment or bringing it to campus with her. She labels herself a "foodie" and considers herself an expert on the local restaurant scene. Madison also introduced the idea of having a "Roomie Night" each week where she and her roommates would order in and bond over some trash TV.

Facts about Madison:

- Madison eats out 5 times a week
- She has a \$300 a month grocery bill
- Madison pays for "Roomie Night" food every week, because her roommates are broke

True or False: Campus Cash can be loaded on your Nighthawks Card and stays on your account until you graduate.

Housing (commuter)

Javier is a rising junior at UNG and has been living at home during his freshman and sophomore years. Javier feels that he is missing out on part of the "college experience" and is considering moving out. If he chooses to move out he'll be signing a one-year lease.

Facts about Javier:

- Javier's parents are willing to continue to let him live with them rent free
- Javier will need to take out a loan to cover the monthly rent if he moves out
- He could move in with a friend who has a decent, but unimpressive house for \$400 per month
- He could move into the new luxury student apartments for \$750 per month
- The apartment has a pool, a gym, tennis courts, a coffee bar and community center. His friend's house has none of these
- Javier REALLY likes the luxury apartments

Housing (residential)

Rebecca just finished her freshman year at UNG. While living on campus she made a few mistakes that ended up costing her money she shouldn't have had to spend. She signed up for a meal plan that she didn't always use, she lost her ID a few times, didn't use the Dining Dollars included on her meal plan, and she forgot to report some damage to her room when she moved into the Residence Hall.

Facts about Rebecca:

- Rebecca had an average of 8 meals a week go unused on her meal plan, eating out instead
- Rebecca had \$100 of unused Dining Dollars
- Rebecca lost her ID twice last year
- Rebecca had to call to be let into the residence hall 4 times because she had lost her ID
- Someone found one of Rebecca's lost ID and drained all the Campus Cash out of her account
- Rebecca and her roommate found a hole in the wall a week after they moved in, but didn't report it until move-out inspection

True or False: Even if you have a parking pass on one campus, you will need to park in a "visitor" spot on other campuses.



GUIDE TO CAMPUS BASICS

BOOKSTORE

BARNES & NOBLE COLLEGE BOOKSTORE CARRIES: TEXTBOOKS, SCHOOL SUPPLIES, SNACKS, GIFTS, AND OFFICIAL COLLEGIATE APPAREL

BARNES & NOBLE

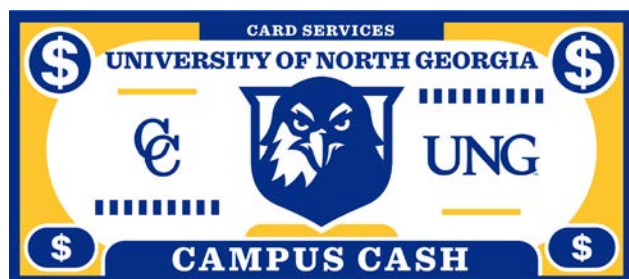
COLLEGE



CARD SERVICES

YOUR NIGHTHAWKS CARD ALLOWS YOU TO:

- Gain access into your residence hall
- Check books out at the libraries
- Access your meal plan
- Access the campus recreation centers
- Purchase goods and services at campus retail outlets
- Access your Student Printing
- Attend University events
- Get credit for co-curricular participation
- Gain access to student services across all campuses



WHAT IS CAMPUS CASH?

Campus Cash is an account on your Nighthawks Card that gives you access to purchases without having to carry cash, credit cards, or checks around campus. (Save 5% by using Campus Cash at on-campus dining locations.)

DEPOSITING MONEY

- **In Person** – at the Dahlenega or Gainesville Card Services locations
- **Online** – www.ung.edu/card-services

No matter which deposit option you choose to make your deposit, funds are available for immediate use.

DINING SERVICES

CONVENIENT, QUALITY FOOD FOR STUDENTS, FACULTY, STAFF, AND VISITORS IS JUST A STEP AWAY.

Each of the two largest campuses have a selection of dining halls, various eateries, and/or Provisions on Demand stores (POD) from which to choose. For your convenience, all locations accept Campus Cash.

DAHLONEGA

UNG Dining Hall
 Starbucks, *Chestatee Building*
 Einstein Bros Bagels, *Hoag*
 Wild Blue, *Hoag*
 POD Express, *Hoag*
 Twisted Taco, *Hoag*
 Chow House Diner, *Top of UNG Dining Hall*
 Java City, *Mike Cottrell College of Business Building*

GAINESVILLE

Food Court, *Student Center*

- Burgers + Fries
- Trattoria
- The Spread
- Food Lab
- The Iron Skillet

UNG Coffee Bar, *Nesbitt Building*

MEAL PLANS ARE AVAILABLE ON THE DAHLONEGA CAMPUS ONLY.

Students living in a residence hall that requires a meal plan are automatically assigned the All Access Plus Plan. Students may request to change their meal plan through the end of drop/add by completing the Change Meal Plan Form via their Banner account.

Non-Resident students and students living in Owen Hall may purchase Block Meal Plans at Card Services or online at ung.campusdish.com.



PARKING AND TRANSPORTATION

ALL STUDENTS CAN REGISTER FOR A PARKING PERMIT BEGINNING AUGUST 1ST OF EACH YEAR.

It is your responsibility to register for your permit prior to the start of each fall semester. Expired permits will result in parking fines. Parking permits are not required during the summer.

GETTING YOUR PERMIT

Register your vehicle online: ung.aimsparking.com. Be prepared with the make and model of your vehicle, as well as the license plate tag number.

DRIVING A DIFFERENT CAR?

If you are driving a different car temporarily on campus for any reason, you will need a temporary parking permit. Make all changes online at ung.aimsparking.com. All permits are issued virtually, so no matter what car you bring to campus, all you need to do is register online!

SHUTTLE SERVICES

UNG has a shuttle service on the Dahlenega and Gainesville campuses. Rather than waste time searching for a spot, consider parking farther away and riding the shuttle.

Visit ung.edu/parking-transportation for more information on:

- Shuttle Services
- Permits/Parking Codes
- Tickets/Citations
- Commuter Parking Maps

PARKING TICKETS

Vehicles that are improperly parked, or do not have a current virtual parking permit will be ticketed by Parking Services. Parking fines can be paid in person or via the Parking Services Web Portal. Use the Parking Services portal to submit all parking ticket appeals.

PRO TIP:

STUDENTS MUST PARK IN THE STUDENT SPACES ON ALL OF THE UNG CAMPUSES.
FOLLOW US ON SOCIAL MEDIA FOR UPDATES:
[@UNGPARKINGSERVICES](https://twitter.com/UNGPARKINGSERVICES)

Passio GO



Download the Passio GO! app to track our shuttles from your smartphones!



UNG PUBLIC SAFETY

OUR DEPARTMENT IS COMMITTED TO SUPPORTING A SAFE PLACE TO LEARN, GROW, AND VISIT.

All UNG officers are sworn, certified Police Officers who are ready to assist you when needed. Please add our number to your cell phone contacts for emergency and non-emergency assistance. All calls are routed through the central communications division, which operates 24 hours a day, 365 days a year.

UNG ALERT

The UNG Alert service can help you stay informed about emergency alerts and procedures; weather delays and closings; and traffic accidents and parking closures. Students may program up to six numbers to receive voice, text, or email messages, so be sure to have this enabled and have your contact information updated in Banner! We value your privacy, so the contact information you provide to the UNG Alert service will be used for campus emergency notifications only and will not be made available to any other service.

HOW TO SIGN UP FOR UNG ALERT

Login to Banner and choose Personal Information > Emergency Alert System.

IMPORTANT: It is essential for students to enter all of their contact information into the UNG Alert database. The more means we have to contact individuals, the better our odds are of spreading timely information and keeping everyone safe.

PRO TIP:

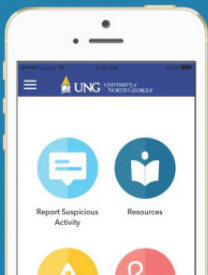
SAVE THE UNG PD NUMBER IN YOUR CELL PHONE FOR ON-CAMPUS EMERGENCY AND NON-EMERGENCY ASSISTANCE:

706-864-1500

LIVESAFE APP

The free LiveSafe app provides students, faculty, and staff with a direct connection to campus police so that everyone can easily communicate all their safety needs.

- See Something? Send a Picture.
- Urgent Information at your Fingertips.
- Stay Safe, Always
- Peace of Mind



Get the App

- 1 Download "LiveSafe" from Google Play or the App Store.
- 2 Register with your phone number.
- 3 Search for & select your organization. You're set!





AlcoholEdu & Sexual Assault Prevention

As part of our comprehensive education program, UNG requires all newly admitted students to complete AlcoholEdu and Sexual Assault Prevention courses. These two online courses will empower you to make well-informed decisions about issues that affect your college years and beyond.

WHAT IS ALCOHOLEDU?

AlcoholEdu is a confidential, science-based course that will empower you to make well-informed decisions about alcohol, prepare you to respond to risky situations, and help you reach your personal and academic goals.

WHAT IS THE SEXUAL ASSAULT PREVENTION COURSE?

Sexual Assault Prevention for Undergraduates (SAPU) is a confidential course on healthy relationships, sexual violence, stalking, and relationship violence to help you better understand sexual assault and learn about consent.

IMPORTANT: Each course is divided into two parts, so you must complete four modules total to satisfy the requirement. Failure to complete part 1 of each course by the 1st deadline will result in a hold that prevents class registration for future semesters. Part two of each course will not unlock until 30 days after you have completed part one of the course. You will receive an e-mail when it is unlocked and available for you to complete.

DEADLINES FOR COMPLETION

For Summer and Fall Semester Starters

- 1st Deadline—October 1st
- 2nd Deadline—November 1st

For Spring Semester Starters

- 1st Deadline—February 20th
- 2nd Deadline—March 20th

All new students will receive an email from Vector outlining how to complete the required training on alcohol and sexual misconduct. Students should be on the lookout to receive an email after the add/drop period.

TO ACCESS THE COURSE AND FOR MORE DETAILS:

<https://go.ung.edu/asapu>

PRO TIP:

IF YOU HAVE ALREADY COMPLETED THESE COURSES AT A PREVIOUS INSTITUTION, PLEASE CONTACT VECTOR.LMS@UNG.EDU TO DISCUSS THE POSSIBILITY OF A WAIVER.

CODE OF CONDUCT

AT UNG, STUDENTS ARE EXPECTED TO BE MODEL CITIZENS. THEIR ACTIONS AND BEHAVIOR SHOULD REFLECT THE CORE VALUES OF THE UNIVERSITY.

UNG strives to educate students and develop leaders who are prepared for community, state, and global service. Essential to this purpose, the University has a Student Code of Conduct that seeks to protect the rights of all students and other University members and constituents. Students involved in violations of behavior or academic standards are provided an opportunity to understand the specific concerns and provide a response to the concerns prior to a decision being made. Students are also provided rights to appeal decisions resulting in suspension or expulsion, or removal from an academic program. Students can find more information about the Student Conduct process on the Office of Student Integrity website, www.ung.edu/student-integrity.

SEXUAL MISCONDUCT/TITLE IX

The University of North Georgia will not tolerate sexual misconduct, which includes, but is not limited to: domestic violence, dating violence, sexual assault, sexual exploitation, sexual harassment, and stalking. Furthermore, the University strongly encourages members of the University community to promptly report instances of sexual misconduct. You can confidentially report an incident of sexual misconduct to a privileged employee (which are employees in UNG Student Counseling and UNG Student Health Services). If you report incidents to any other UNG employee (which includes faculty, staff, resident assistants, orientation leaders, and any others not working in UNG Student Counseling or UNG Student Health Services), the employee will report the information to the Title IX Coordinator.

UNG strives to ensure that all parties involved receive appropriate support and fair treatment, and that allegations of sexual misconduct are handled in a prompt, thorough, and equitable manner. If you would like more information about the UNG sexual misconduct policies and procedures, how to report a case, or to contact the Title IX Coordinator or Title IX staff on your campus, please visit the ung.edu/title-ix website or email titleix@ung.edu.



NEED TO TALK WITH SOMEONE?

The Dean of Students Office advocates for and supports students as they pursue their goals at UNG. The Dean of Students Office can connect students to resources on campus to address their needs and interests.

Common ways the Dean of Students Office can help:

- Provide guidance and interventions for students and families during personal emergencies or difficult circumstances
- Provide consultation to faculty and staff regarding student issues or concerns
- Respond to general student issues and concerns and advocate for students
- Coordinate and lead the Behavior Intervention Team
- Encourage students, faculty, and staff to recognize the importance of wellness as it effects student success
- Coordinate initiatives and efforts to support student success

Meet the Dean of Students

Blue Ridge & Dahlonega: Glen Harris, Jr.

Cumming & Gainesville: Dr. Darcy Hayes

Oconee: Ebonee Dendy

INFORMATION TECHNOLOGY SERVICES



INFORMATION TECHNOLOGY (IT) SERVICES IS COMMITTED TO YOUR SUCCESS AT UNG BY SERVING AS YOUR POINT OF CONTACT FOR ALL YOUR TECHNOLOGY RELATED QUESTIONS AND REQUESTS, AS WELL AS DIFFERENT TECHNOLOGICAL RESOURCES. VISIT UNG.EDU/IT FOR MORE INFORMATION.

CAMPUS SUPPORT

UNG IT provides a multitude of support options. Phone, email, text, self-service, and direct in-person support are available. UNG IT services is located on all of UNG's campuses in the following locations:



- Blue Ridge - Room 144
- Cumming- Room 253
- Dahlonega- Library Technology Center, Room 164
- Gainesville- Watkins Building, Room 155
- Oconee- Administration Building, Room 207

RESOURCES

UNG students have access to many technology resources both on and off campus. Some of the highlights include:

- Personal Computing Support
- Office 365 Email and Calendar
- Microsoft Office Professional Suite for personal device installation
- OneDrive with 1 TB of cloud storage
- Individual print balance of \$20 each semester you're enrolled



2FA, PASSWORDS, AND SECURITY

Your security is important. Two-factor authentication (2FA) provides an additional layer of security utilizing a physical device. All UNG students are required to have 2FA enabled. Visit go.ung.edu/2fa for more information.

Do not share your password with anyone. UNG IT will never ask you to share your password. When creating your password we suggest choosing an alphanumerical that is not easy to guess. You will be required to change your password throughout your time at UNG. For more information visit password.ung.edu.



UNG
UNIVERSITY of
NORTH GEORGIA
DIVISION OF
INFORMATION TECHNOLOGY

PHONE: 706.864.1922
TEXT: 706.250.1922
HELPDESK@UNG.EDU

Sync Your Email



STUDENTS ARE EXPECTED TO USE THEIR UNG EMAIL TO CONDUCT ALL UNIVERSITY-RELATED BUSINESS.

TECH TIPS

- Computer Slow? Visit the IT Service Desk for support!
- Software Install
 - Mobile Printing
 - Office Software
- Visit service.ung.edu for self-help knowledge and IT information
- Mobile Device Printing
- Check your UNG email often
- Visit go.ung.edu/it-help for hours and locations for each UNG campus

As always, you can call us at 706-864-1922 or email us at helpdesk@ung.edu for more information.

- For Information Technology resources, visit ung.edu/it
- Links for faster access:
 - Password Management - password.ung.edu
 - Email - mailbox.ung.edu
 - Banner - ung.edu/banner
 - MS Office - office.ung.edu
 - Virtual Desktop- vlab.ung.edu
 - Application portal- auth.ung.edu

IMPORTANT: Make it a habit to enable push notifications, check your inbox, and respond to messages every day. Some email communications are extremely time sensitive!



STUDENT ACADEMIC SUCCESS

NOT SURE WHERE TO START? ACADEMIC SUCCESS COACHES ARE HERE TO HELP!

An Academic Success Coach (ASC) can help you with a variety of topics including time management, study skills, notetaking, motivation, and test preparation. They can also help you find solutions to academic issues you may be facing. Appointments are available in-person on Gainesville, Blue Ridge, and Oconee campuses and virtually for Cumming, Dahlonega, and Gainesville campuses. Schedule with an ASC through the UNG Success Hub app!

Perhaps the biggest difference between high school and college is the level of personal responsibility it takes to do well academically. UNG's curriculum will require you to do substantial reading, writing, problem-solving, and critical thinking, and it will be up to you to keep track of due dates and deadlines, to monitor your progress in class, and to ask questions when you have them. UNG has a variety of services to support your success, but it's up to you to be proactive and responsible in your academics.

2025-2026 Page 26

THINK ABOUT IT

- How do you plan to respond to academically challenging coursework?
- What strategies will you use to keep track of all your assignments, quizzes, tests, and the grades you earn?
- How often will you take advantage of educational workshops and visit instructors during their office hours?
- What will you do if you find yourself struggling in class? Will you give up or will you persevere and seek help?
- Will you get connected to the campus community by joining a student organization or intramural sport?

DON'T WAIT UNTIL IT'S TOO LATE; TAKE THE INITIATIVE TO EXPLORE EARLY AND OFTEN ALL OF THE ACADEMIC SUPPORT SERVICES AVAILABLE ON YOUR CAMPUS.

SEARCH THOUSANDS
OF ELECTRONIC
RESOURCES ONLINE AT
UNG.EDU/LIBRARIES

LIBRARIES

UNG LIBRARIES SUPPORT AND ENHANCE THE UNIVERSITY'S STUDENT-FOCUSED AND GLOBAL MISSION BY FOSTERING LEARNING AND ACADEMIC EXCELLENCE THROUGH DIVERSE COLLECTIONS, SERVICES, AND TEACHING, CREATING A CULTURE OF INQUIRY, RESEARCH, AND LIFELONG LEARNING IN THE ACADEMIC AND REGIONAL COMMUNITIES.

The UNG Libraries offer an ideal environment for study and research. Each of our campuses has an on-site library, and research assistance is available both in-person as well as via chat, video conferencing, email, or phone.

WHAT WE DO

Our librarians offer reference assistance and research consultations to help students generate ideas for topics, gather background information, and determine where to search for information for their research assignment needs. Your professors also may have a librarian work with your classes to offer instruction and assistance when you have a research paper or presentation to complete.

WHAT WE HAVE

The UNG Libraries' growing collection holds over 650,000

print and electronic titles. As a student, you will also have access to 400+ academic databases containing full-text electronic journals, electronic books, and streaming videos. These electronic resources are available 24/7. In addition to these resources, each library has computing and study spaces for students to use.

ACCESSING LIBRARY MATERIALS

The website (ung.edu/libraries) is the starting point for accessing the wealth of the Libraries' collections and services. You will find print and electronic books, journal articles and other e-resources, including GALILEO databases. If a book you need is not available at your campus it may be requested from another UNG campus location using the library catalog. You can also find information about hours, research assistance, and library policies on the website. If you are not finding your answer, please ask. Librarians are always happy to assist you, especially with strategies for locating and requesting resources.

REQUESTING OUTSIDE MATERIALS

If UNG doesn't have the resource you need, you may request print books from other University System of Georgia (USG) libraries through the GIL Express service. Materials requested via GIL Express are delivered to the UNG libraries within five business days. If a resource is not available through the UNG Libraries or GIL Express you may use our Interlibrary Loan service, linked on ung.edu/libraries.

SUPPLEMENTAL INSTRUCTION

DO YOU WANT TO START YOUR COLLEGE CAREER OFF ON THE RIGHT FOOT? THEN MAKE PLANS TO ATTEND SUPPLEMENTAL INSTRUCTION!

Supplemental Instruction (SI) is an internationally recognized academic success program designed to help students navigate historically difficult courses. We do this through additional exposure to, and practice with, course material in a collaborative group setting. We provide scheduled weekly review sessions led by an SI facilitator—a student who has successfully completed the course at UNG. The SI facilitator attends class with the students to keep up with the course material, and meets with the professor to discuss how to further help students succeed in the course. The University of North Georgia students who have used SI have earned, on average, half a letter grade higher than those who didn't use the program—that's the difference between a B and an A! All SI sessions are free, voluntary, and open to all students enrolled in the course. So whether you're struggling to grasp the course material, or you simply want to gain a better understanding and stay on top of your coursework, come to SI!

For more information on the SI program, as well as a full list of SI-supported courses for each semester, visit ung.edu/si.



TUTORING SERVICES

Currently enrolled students can receive free and comprehensive tutoring in a variety of subjects—including accounting, chemistry, math, physics, and writing. (In-person services vary by campus.) Tutoring is provided by professional and peer tutors who can help you bridge the learning gap between in-class work and homework. For more information, visit ung.edu/tutoring-services.



"[My facilitator] made the material fun and engaging with the activities he made and his sense of humor. He was incredibly helpful, and would pretty much cover everything- sometimes stuff that I don't remember from class." - *Previous SI Participant*



tutor.com™

A Service of **The Princeton Review**

If you need homework help, live tutoring, or someone to review your writing, utilize Tutor.com. To access this online tutoring service, login to eLearning@UNG (D2L) and click on the Tutoring link in the top navigation bar then select Tutor.com. Tutor.com is a convenient, effective, and free way to increase student success, 24 hours a day, 7 days a week.

Tutor.com will allow students to:

- Work with a qualified tutor
- Submit a piece of writing to the Online Writing Lab
- Submit a question and get a response, usually within 24 hours
- Schedule an appointment with an E-structor® Certified tutor



EXCLUSIVE!

MAXIMIZE YOUR LEARNING



ACADEMIC ENGAGEMENT

At the University of North Georgia, we believe that deep learning occurs both inside and outside of the classroom. Service-learning is an experiential educational opportunity through which students combine their classroom studies with meaningful community development and engagement. These hands-on experiences help to reinforce academic material and allow students to learn important professional and leadership skills, become more civically aware and involved, and grow personally.

To learn more about service-learning opportunities at UNG, please email AcademicEngagement@ung.edu.

STUDY ABROAD

The Center for Global Engagement (CGE) is UNG's connection to the world. CGE is home to International Student and Scholar Services, and Education Abroad. CGE provides global opportunities to UNG students and faculty to enhance their cross-cultural perspectives and global understanding. These programs validate the CGE mission of facilitating international and cross-cultural experiences for students, faculty, staff, and the greater community to better integrate the University of North Georgia into the globalized world.

For more information on how to participate in a program abroad, please visit ung.edu/cge.





The Ascend Centers are comprised of **four offices** that offer UNG students unique opportunities to enhance their undergraduate experience both within UNG and beyond. Our offices offer integrated academic opportunities in research, scholarship, and leadership to prepare students for success and help them achieve their individual goals.

UNG Honors Program

The UNG Honors Program invites students to Learn, Lead, and Serve in its enriching and innovative academic community. Housed on the Dahlonega and Gainesville campuses, the Honors Program supports and challenges motivated students through deepened classroom and extra curricular experiences with a community of like-minded scholars. Honors students enjoy priority registration, small class sizes, access to mentors and more.



McNair Scholars Program

The McNair Program prepares sophomores, juniors and seniors from all UNG campuses for post-graduate studies through involvement in research and scholarly activities. Participants demonstrate strong academic potential and are either first-generation college students with financial need or members of a group traditionally underrepresented in graduate education. Currently, over 80% of our graduates are enrolled in a graduate program with financial support.

Undergraduate Research

The CURCA office helps students of all majors pursue Undergraduate Research (UR) opportunities. UR helps students make their learning personal and advances skills like designing and leading research or creative projects and presenting and publishing findings. UR helps students expand their knowledge, build a network of mentors and colleagues, and become a stronger scholar. CURCA also coordinates the Annual Research Conference and offers travel grants to support students who wish to present their research at external conferences.

Nationally Competitive Scholarships

The Nationally Competitive Scholarships (NCS) Office supports students in identifying and applying to over 50 scholarships. Through individual mentoring, we work to develop students' writing skills. Students curate their stories to align with their audience, see the value in their experiences, and begin imagining themselves as leaders in their fields. UNG students continue to win a number of competitive scholarships - such as the Goldwater, Gilman, Boren, and Truman. UNG is also nationally recognized as a top producer of Fulbright awardees.

To learn more, please visit: ung.edu/ascend

UNG FOOD PANTRY

The UNG Food Pantry provides food, personal hygiene products, and school supplies to students, faculty, and staff in need.

All you need is your UNG ID for us to serve you!

For more information about volunteering, donating, utilizing the food pantry, or after-hours access, please see the contact info for your campus.



Campus Contacts:

Blue Ridge

- Student Success Center 127
- (706) 946-5465

Cumming

- University Center 285

Dahlonega

- Stewart Center 276
- (706) 864-1412
- foodpantrydah@ung.edu

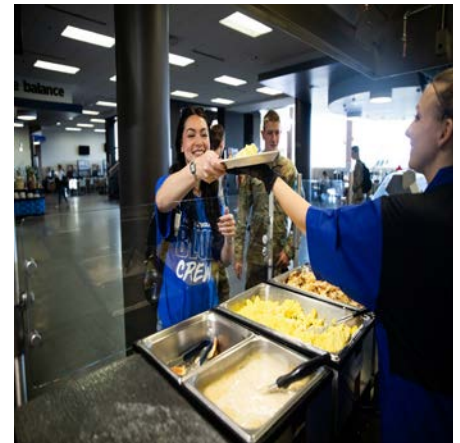
Gainesville

- Student Center 341
- (706) 717-3877

Oconee

- Student Resource Center 541
- (706) 310- 6310





STUDENT SERVICES

THE DIVISION OF STUDENT ENGAGEMENT AND SUCCESS IS COMPRISED OF SEVERAL DIFFERENT OFFICES OFFERING SERVICES, PROGRAMS, AND ACTIVITIES DESIGNED TO SUPPORT YOUR DEVELOPMENT OUTSIDE THE CLASSROOM.

CAMPUS RECREATION AND WELLNESS

Our department's mission is to promote an inclusive UNG community that advances student development and the student experience by providing comprehensive recreational and wellness programming and facilities that provide leadership and Service opportunities.

Campus Recreation and Wellness hosts a variety of opportunities to get involved. These opportunities include:

- Fitness Centers
- Group Exercise Classes
- Intramural Sports
- Outdoor Pursuits
- Sports Clubs
- Wellness Programs and the Eight Dimensions of Wellness

For a complete list of programs and services, visit go.ung.edu/crw for more information.

CAREER SERVICES

Have you settled on a career path? Use Focus 2 and our Digital Career Counselor to explore ideas and research potential paths. Meet with a career specialist who can help you identify a meaningful direction. Once you know where you are heading, our specialists will assist with the search for internships or research opportunities that provide you the experience, insider information, and connections needed to be ready to launch your career or pursue graduate school.

Whether you need to choose a major, write a resume, prep for an interview, plan for continuing education, or learn to network, we have specialists and resources to move you forward on your path.

Check out our social media so you can stay informed about employers on campus, career chats and more—follow us on Facebook, Twitter,

- Instagram, and LinkedIn. Join our Career Services group on UNG Connect. Handshake is another essential tool we provide. As UNG's career management system, login in with your UNG username and password to activate your account and complete your profile. Gain access to thousands of internships and jobs, as well as information about our career events, fairs, and more. We look forward to helping you prepare for a great future!

- Check out www.ung.edu/careers to book an appointment or find videos and valuable career information.

DEAN OF STUDENTS

- The Office of the Dean of Students is a place students can go if they need assistance and are not sure where or how to obtain resources or answers to their questions. Deans educate students on relevant University policies and procedures to resolve their particular concern, including the community standards outlined in the Code of Conduct. The Dean of Students also serves as a resource for parents, primarily when students begin college, experience hardships, or encounter concerns.

- The Deans of Students encourage new students to make plans to get involved and connect with campus resources and services that will help them be successful and have a great college experience!

ABSENCES, HARDSHIP WITHDRAWALS AND STUDENT SUPPORT

- The Dean of Students assists students who experience unforeseen absences that can be documented with the excused absence notification policy and request form.

- If you are experiencing a medical, financial or other hardship that is negatively impacting your ability to complete your coursework, please let us know. Whether prior to the semester midpoint or beyond, the Dean of Students can review your

- situation and explain the hardship withdrawal process. The Office will also connect you to University and/or community resources most pertinent to your situation.

KEEPING OUR COMMUNITY SAFE

- Our University communities also benefit when community members submit incident reports to the Dean of Students Office regarding peers in distress who could benefit from some support services or a situation that is negatively impacting a campus community. Deans of Students rely upon all members of the University community to submit report of concern via the [See Something, Say Something](#) online report. These reports enable the Deans of Students to keep our campuses safe, well, and ideal for learning.

FRATERNITY & SORORITY LIFE

- Did you know that UNG has a dynamic fraternity/sorority community comprised of over 15 different organizations? Our organizations foster the development of leadership skills and enhances members' personal lives. We pride ourselves on our ability to cultivate a strong sense of belonging among our members because joining a fraternity/sorority gives students another family to support them. Students who join fraternities and sororities can make a difference in their local and campus community through philanthropic endeavors and service projects. Our chapter GPA averages higher than the UNG Undergraduate average GPA and our members are more likely to graduate. We also offer over 300 leadership positions within our community to help students develop necessary leadership skills to prepare them for successful careers.

- Our primary recruitment season is during the fall semester. Students can join any fraternity/sorority, regardless of home campus, as long as they are enrolled in either a bachelor's degree-seeking program or an associate pathway program (no

dual-enrollment students). For more information about our community, please visit: ung.edu/fraternity-sorority-life.

STUDENT ORIENTATION & SUCCESS

Student Orientation and Success is dedicated to meeting the unique needs of all UNG students, including new freshmen, transfer students, readmit students, adult learners, and military connected students. SOS is here to help prepare you for college success and global citizenship with intentional programming and cross-campus collaboration. Through engaging curricular and co-curricular opportunities, you will connect with peers, faculty, staff, and the university while learning to navigate UNG resources and processes.

RESIDENCE LIFE

Residence Life provides a variety of housing options for students who are enrolled at the Dahlonega campus. Please be aware that there is a residential requirement for students with 30 credit hours or less on the Dahlonega campus. As we approach the new academic year, here are a few points to keep in mind:

APPLICATION PROCESS

Students are charged a one-time, **non-refundable** \$150 housing application fee when applying for housing for the first time at UNG. Students will not be charged the fee when applying for housing in subsequent years. However, if a student applies for housing but decides to never live on campus at UNG, the student will still owe the \$150 fee.

DEGREE LEVEL WITH CAMPUS CHANGE STUDENTS

For students who plan to make a degree level with a campus change to the Dahlonega campus, housing is available on a first come, first

- served basis. Be sure to indicate
- your housing preference when
- submitting your Degree Level Change Application form in Banner. Once
- your application is approved, you will
- need to email residencelife@ung.edu
- via your UNG e-mail account with
- your name and UNG ID# requesting
- access to the housing portal. Students
- changing campuses who have at least
- 30 credit hours are eligible to live off
- campus.

RESIDENTIAL STUDENTS

- Once you have started a housing
- application, you need to watch your
- UNG email for further direction.
- After completing the housing
- application, residential students may
- view the housing and roommate
- assignments by logging on to the
- UNG Housing Portal and clicking
- on the "Application Status" button.
- Move-in will be August 7th-9th;
- students who have signed a housing
- contract will be eligible to sign up
- for a specific day and time later in
- the summer. Students should watch
- their UNG email to register for their
- move in day/time. In prepping for
- move-in, you may view floor plans,
- furniture dimensions, and take photo
- and video tours on the Residence
- Life website. Please be advised that
- Residence Halls are not available for
- private tours.
- If you would like to live on campus
- but have not yet applied for housing,
- please call 706-864-1902 or email
- residencelife@ung.edu to check on
- availability.

STUDENT COUNSELING

- Coming to college is a big adjustment
- for many people. It can be the first
- time you have lived away from your
- family and the first time you are
- making your own decisions. Most
- people run into a few problems in the
- process of navigating the new place
- and new relationships.
- Would you know how to handle
- feeling homesick? Would you know
- what to do if you were struggling with
- time management, test anxiety, or
- not making the grades you expected?

- What if you had a conflict with your
- roommate or dating partner? Having
- trouble making friends? What if you
- felt depressed or anxious and just
- couldn't shake it? Student Counseling
- is here to help!

- Our services are free and confidential.
- We have several counselors, operate
- by appointment as well as have
- walk-in hours. If you are ever having
- a crisis, we definitely want you to
- walk-in to see us right away. Call or
- stop by the office whenever you need
- us! Please see our web page for more
- info: ung.edu/student-counseling/

STUDENT ACCESSIBILITY SERVICES

- Student Accessibility Services
- (SAS) coordinates reasonable
- accommodations and services for
- students with disabilities.

Who should contact Student Accessibility Services?

- Students who had accommodations
- in high school and students who
- suspect they have a disability and
- would like to see if they are eligible
- for accommodations should contact
- SAS.

What is considered a disability?

- A disability is an impairment that
- substantially impacts your functioning
- at college. Areas of disability include,
- but are not limited to, chronic medical
- conditions, learning disabilities,
- psychological disorders, visual
- and hearing impairments, autism
- spectrum disorders, ADHD, brain
- injury, and mobility impairments.

Will my IEP or 504 Plan be sufficient documentation?

- To determine the most effective
- accommodations for you at
- the college level, a current
- psychoeducational or medical
- evaluation is usually required. SAS will
- assist you in arranging an evaluation
- if one is needed.

Will my accommodations be recorded on my transcript?

Information pertaining to a disability is confidential and will not be shared without prior written permission from the student. Neither disability nor the use of accommodations is noted on a student's academic transcript.

How do I arrange for accommodations?

Schedule an appointment with the SAS representative on your campus as soon as possible. Please be sure to bring current documentation supporting the need for accommodations with you.

Where do I go for more information?

Additional guidelines, forms, and FAQs are available online via the SAS website: ung.edu/student-accessibility-services/

STUDENT HEALTH SERVICES

Academic success is greatly influenced by our physical well-being. Student Health Services can be a resource for the evaluation and treatment for students experiencing acute illnesses and minor injuries in addition to preventative services. Student Health Services is available to all eligible UNG students enrolled in classes who have paid the health fee each semester. The health fee for eligible students, if not automatically applied on their tuition statement, can be paid for the semester through the business office. No insurance is required to access clinic services.

Services

The General Clinic offers services related to acute illness (flu, covid, strep, mono, etc.), minor injuries and procedures, and physical exams (nursing, sports, PT, etc.) The Women's & Men's Clinic offers services related to annual wellness exams, birth control consultations, PAPs, pregnancy testing, testicular health, and STIs. Student Health also offers a variety of immunizations, PPD skin testing, quantiferon TB Gold, and immunization titer tests. More detailed information on services and pricing can be located on ung.edu/student-health-services/

Hours of Operation

- M-R: 8:00AM- 5:30PM
- F: 8:00AM-3:00PM
- Closed daily 12:00PM-1:30PM

To make an appointment

- Contact the clinic during business hours.
- 24/7 Scheduling through the Patient Portal. Access through ung.edu/student-health-services/.
- Appointments are preferred, but walk-ins are allowed schedule permitting.

STUDENT ENGAGEMENT & LEADERSHIP

The Center for Student Engagement and Leadership recognizes that engagement is the best predictor of student success. We strive to serve and give voice to all students by empowering you through opportunities of self-advocacy (Ex. Fraternity and Sorority Life), connecting (Ex. Student Organizations), leadership (Ex. Student Government Association) and mentorship (Ex. Community Service) to achieve your individual goals.

Furthermore Student Engagement and Leadership coordinates a variety of programs, services, facilities, and co-curricular experiences that enhance a student's academic and personal development.

UNG CONNECT

Diving into campus life is a key part of college, but it's normal to feel a bit lost at first. That's where Student Engagement comes in! We're here to guide you, whether you prefer face-to-face help or exploring online through UNG Connect. Think of UNG Connect as your central hub for all things student organizations, leadership, and service. Each group has its own space to connect, plan events, and share news.

Want to find your niche? Browse UNG Connect – it's quick and easy! Prefer in-person connections? Don't miss Nighthawks Fest during Weeks of Welcome, our big student organization fair. Here's how to jump in:

- Go to Connect.ung.edu
- Complete your profile.
- Click "Groups" or use the search bar. Find groups that interest you
- Hit "Join Group."

Plus, you can earn points for attending events and checking in on Connect, which you can redeem for cool prizes like stickers, tumblers, and hoodies! We can't wait to see you get involved and make your college experience amazing!

Email involvement@ung.edu if you need assistance.

STUDENT LEADERSHIP PROGRAMS

Student Leadership Programs is dedicated to promoting the growth of leaders at UNG. As the state of Georgia's designated leadership institution, it is important that our students be prepared to lead both during and after college. Engaging in activities that enhance your leadership practices helps you become more engaged students, higher academic achievers, and overall more occupationally prepared.

Our signature programs include the Leadership Certificate Program, the Nesbitt Leadership Program, and Student Government Association. Additionally, we offer two leadership conferences during the year; the Student Conference, and the Leaving a Legacy of Leadership (L3) Summit. Our programs are open to all UNG students and are accessible on all UNG campuses.

More information about our programs can be found on our website at ung.edu/student-involvement/leadership-programs

TESTING SERVICES

The UNG Testing Center is dedicated to providing a professional testing environment for the campus and community which enables test takers to perform at their maximum ability. With a location at our Blue Ridge, Dahlonega, and Gainesville campuses, our Testing Center administers a variety of standardized and nationally/state-normed tests, which are administered in the form of paper-based and computer-based exams.

Our services include proctored exams for distance learning programs, credit by examination (DSST and CLEP), UNG Online or eCore exams for midterms and finals, the Teacher Education Certification test (GACE), and the Health Education Systems.

Additional information regarding our services and registration can be found at ung.edu/testing.



UNG

UNIVERSITY of
NORTH GEORGIA™



BOAR'S HEAD BRIGADE

SINCE 1873



The University of North Georgia is a University System of Georgia leadership institution and is the Military College of Georgia®. The Department of the Army has designated UNG a Senior Military College, one of six in the nation.

The Corps of Cadets is a no-nonsense, values-based, fast-moving, nationally prominent leadership development program. Professional Army officers and non-commissioned officers, both active and retired, coach our Cadet leaders in the art and science of military leadership. Cadets then use the student-led chain of command to disseminate information and accomplish all assigned missions. Ultimately, the Corps is run by Cadets themselves. Cadets compete for rank, duty positions, and honors throughout their collegiate career. The end result is a highly educated leader of character who is ready to serve the nation as an Army officer or as a leader in a civilian field of endeavor.

CORPS VALUES

COURAGE
INTEGRITY
LOYALTY
RESPECT
SERVICE
TRUTH
WISDOM



WELCOME TO NIGHTHAWKTM NATION

The University of North Georgia has one of the premier NCAA Division II athletic programs in the nation and is considered a leader on the field of play, in the classroom, and in the community.

UNG fields 13 intercollegiate athletic programs as a member of the Peach Belt Conference and an associate member of the Southern Conference for the university's nationally-prominent rifle program.

North Georgia is home to a championship tradition that is unrivaled in modern collegiate athletics. Since elevating to the NCAA Division II level in 2005, UNG has celebrated a total of 77 Peach Belt Conference Championships, 19 NCAA regional championships and 3 National Championships from the softball program in 2015 and 2023 and Nighthawk pole vaulter Journey Gurley in 2021.

UNG not only boasts team success on the playing field, but individual success in competition and in the classroom. Since 2005, 94 Nighthawk student athletes have been selected as an all-American in their respective sport and 283 have earned academic all-American status.

UNG Athletics strives to provide the Nighthawk Nation with one of the nation's best fan experience both in-venue and digitally. The Nighthawk Sports Network, the digital platform for streaming of home events, is one of Division II's only commercially-supported networks and broadcasts nearly 100 home events per year.

Locally, UNG features some of the nation's best facilities with three artificial turf outdoor venues surrounded by first-class amenities including LED video-boards. A 3,600-seat Convocation Center opened in early 2018 as a new home to UNG basketball.



Find Your *Home*

Fraternities and Sororities at UNG: A community where everyone can find their home.

Learn more [UNG.edu/fraternity-sorority-life](https://ung.edu/fraternity-sorority-life)



ACADEMIC INFORMATION

UNG OFFERS A BROAD RANGE OF ACADEMIC PROGRAMS INCLUDING CERTIFICATES, ASSOCIATE AND BACHELOR'S DEGREES, AND A GROWING NUMBER OF MASTER'S AND DOCTORATE PROGRAMS.

- The **associate pathway** is a 2-year degree that can be applied towards your bachelor's degree, should you choose to continue your post-secondary education. You can start in an associate pathway program on our Blue Ridge, Cumming, Gainesville, Oconee or Online campuses.
- The **bachelor's degree** is a 4-year degree. You can start a bachelor's degree on any campus, but it can only be completed on the Cumming, Dahlonega, or Gainesville campuses or online.

ACADEMIC ADVISING

ADVISORS CAN HELP YOU DEVELOP AN EDUCATIONAL PLAN, ANSWER QUESTIONS ABOUT UNG ACADEMIC POLICIES, AND REFER YOU TO CAMPUS RESOURCES THAT WILL SUPPORT YOUR ACADEMIC SUCCESS.

Academic Advising keeps you on track towards graduation by helping you determine exactly which courses you need to complete the core curriculum and fulfill your major and graduation requirements. Professional advisors in Campus Academic Advising Centers serve students in most majors through mandatory advising. Professional advisors also meet with students who earn grade point averages below certain minimum standards. Other students may be assigned to faculty advisors or advisors who work within the Mike Cottrell College of Business.

ADVISING WEEKS

UNG devotes 4 weeks to Advising Weeks every fall and spring semester immediately before registration opens (check the Registration Calendar for specific dates). All students are strongly encouraged to meet with their advisor before or during Advising Weeks to plan a class schedule for the next semester.

FINDING YOUR ADVISOR

Your assigned advisor is listed in Banner. Login and then choose: Student > Student Records > Student Tranguid. Scroll down to the Academic Information section, and your advisor's name, office location, and email will be listed. Click the "Schedule an Appointment" link or visit the adviseme.ung.edu website to book an advising appointment.

USING THE ADVISING WEBSITE

The my.ung.edu/academic-advising website is a one-stop-shop for information that will guide your educational planning. The Advising Tools link leads to plan of study sheets and course planning guides for major programs. The website also provides step-by-step instructions for how to handle various academic situations, from finding your advisor and changing your major to withdrawing from a course.

UNG'S BLENDED ADVISING MODEL

UNG serves students through a blended advising model in most major programs. Advisees work with Professional Advisors for the first 45 earned credit hours to understand their interest and strengths as related to their chosen majors, the Core IMPACTS, registration and program policies and procedures, academic support services, and the process to establish academic goals. Students then transition to faculty advisors for their junior and senior years, where they receive a greater focus on mentoring, identifying internships, and other discipline-specific learning and career opportunities.

Our philosophy is advising as teaching, and our mission is to assist students in constructing meaningful educational plans based on their interests and abilities consistent with each student's academic, professional, and personal goals. Academic advising fosters the development of students who are self-directed, responsible decision-makers, and supports the successful completion of degree requirements.

PATHWAY+

Academic Advising is one of the important resources for UNG's PATHWAY+ program, which guides students on their college journey with a wide variety of free services to support their academic success and engagement. PATHWAY+ encourages students to set their sights on a four-year degree, expanding their career options, enhancing financial stability and increasing their earning potential. The program gets students off to a good start and helps ensure their success at UNG!



LEARN MORE

See PATHWAY+ details and browse pathway programs. ung.edu/pathway-plus



COURSE FORMATS

UNG offers several course formats. Although the content covered is the same in each course, you'll want to be sure and choose the course format that fits with your preferred learning style. If you're considering an online class, think carefully about your ability to stay on task and complete assignments (by the deadline!) without direct interaction with an instructor. Use the guidelines below to help you decide if online classes are a good "fit" for you.

CAMPUS-BASED

These are in-person classes on one of the five UNG campuses that generally meet 2-3 times each week. Campus-based classes are ideal for those who benefit from being in a physical classroom, listening to the instructor, taking notes, and interacting with peers. Although some course material might be posted online, the majority of instruction takes place in the classroom.

FULLY ONLINE

All instruction for online classes takes place via the internet using an online learning management system. Online students must have reliable access to the internet and login regularly to complete course requirements, such as written assignments, discussions, quizzes, tests, activities, etc. Online classes are a great option for students with good time-management skills who need a flexible class schedule and/or who cannot find the campus-based class they need.

UNG offers two types of online classes:

1. UNG Online classes are taught by UNG faculty and follow the standard UNG Academic Calendar. Most courses are asynchronous meaning that students can log in at any time. Other courses are synchronous meaning the courses have a specific virtual meeting day time.

2. eCore classes are taught by faculty within the University System of Georgia and may have slightly different start/end dates than UNG classes.

HYBRID

Hybrid classes combine face-to-face instruction with online learning. Typically, hybrid courses meet on campus one day per week with the remainder of coursework being completed online (including self-guided lectures, homework, quizzes, and some tests).

ACCESSING YOUR ONLINE COURSE MATERIALS

Log in to the myUNG portal using your UNG credentials. Scroll over the Distance Ed link in the top toolbar, then choose either eLearning/D2L (for UNG Online classes) or GoView (for eCore classes).



eCore is a statewide collaborative program that enables students to earn core credits online while enrolled at UNG.

Steps for Registration:

1. You must complete the eCore Introduction Quiz in order to obtain the necessary eCore pre-requisite.
2. Register for eCore courses in Banner, just as you would for any other class. eCore courses are noted with a G next to the section (ex. ENGL 1101 1AG).

Need-to-Know Information:

- Use “GoView” to access eCore courses.
- The eCore Academic Calendar may differ from UNG’s calendar. Deadlines, start and end dates, and withdrawal periods are unique to eCore.
- A proctored exam or major project is required for all eCore courses! Be prepared to schedule and pay for a Testing Center or ProctorU appointment if your course requires a proctored exam.

- eCore tuition is only \$159 per credit hour, and every eCore course provides a free digital textbook within the course.
- eCore offers full session, 1st short session, and 2nd short session. Please be aware of the class dates when registering.

Please Note: If you experience a closed section message while trying to register for eCore courses, please retry after 10 minutes or use an alternate eCore CRN. If you are still unable to add the course, please contact an eCore advisor for assistance: ecore@ung.edu.

Detailed information is available online:
go.ung.edu/onlinelearning

COURSE	UNG EQUIVALENT	TITLE	HRS
ARTS 1100	ART 1100	Art Appreciation	3
BIOL 1011K	BIOL 1101 & Lab	Introduction to Biology & Lab	4
BIOL 1012K*	N/A	Introduction to Biology II & Lab	4
CHEM 1211K	CHEM 1211 & Lab	Principles of Chemistry I & Lab	4
CHEM 1212K	CHEM 1212 & Lab	Principles of Chemistry II & Lab	4
COMM 1100*	COMM 1100	Human Communication	3
CSCI 1301K	CSCI 1301K	Computer Science I	4
DATA 1501*	DATA 1501	Introduction to Data Science	3
ECON 2105	ECON 2105	Principles of Macroeconomics	3
ECON 2106	ECON 2106	Principles of Microeconomics	3
ENGL 1101	ENGL 1101	English Composition I	3
ENGL 1102	ENGL 1102	English Composition II	3
ENGL 2111	ENGL 2111	World Literature I	3
ENGL 2112	ENGL 2112	World Literature II	3
ENGL 2131	ENGL 2131	American Literature I	3
ENGL 2132	ENGL 2132	American Literature II	3
ENVS 2202*	BIOL 1260L	Environmental Science (no lab)	3
GEOL 1121K	GEOL 1121K	Introductory Geosciences I & Lab	4
HIST 1111	HIST 1111	World History I	3
HIST 1112	HIST 1112	World History II	3
HIST 2111	HIST 2111	US History I	3
HIST 2112	HIST 2112	US History II	3
MATH 1001	MATH 1001	Quantitative Reasoning	3
MATH 1101	MATH 1101	Mathematical Modeling	3
MATH 1111	MATH 1111	College Algebra	3
MATH 1113	MATH 1113	Precalculus	3
MATH 1401	MATH 1401	Introduction to Statistics	3
MATH 1501	MATH 1450	Calculus I	3
MUSC 1100	MUSC 1100	Music Appreciation	3
PHIL 2010	PHIL 2010	Introduction to Philosophy	3
PHYS 2211K	PHYS 2211 & Lab	Principles of Physics I & Lab	4
PHYS 2212K	PHYS 2212 & Lab	Principles of Physics II & Lab	4
POLS 1101	POLS 1101	American Government	3
PSYC 1101	PSYC 1101	Introduction to Psychology	3
SOCI 1101	SOCI 1101	Introduction to Sociology	3
SPAN 2001	SPAN 2001	Intermediate Spanish I	3
SPAN 2002	SPAN 2002	Intermediate Spanish II	3

*BIOL 1012K, COMM 1100, DATA 1501, and ENVS 2202 will require manual registration by an eCore Liaison.

ASSOCIATE DEGREE = 60 CREDIT HOURS

(CAN BE STARTED ON THE CUMMING,
GAINESVILLE, OR OCONEE CAMPUS, OR ONLINE)
See Page 42 for the current list of Associate Pathways available by campus

CORE IMPACTS + Field of Study:

(42 hrs) + (18 hrs)

UNDERSTANDING YOUR DEGREE

WHAT'S REQUIRED

As you can see in the chart above, to complete an associate pathway, students must earn a minimum of 60 credit hours. To complete a bachelor's degree, students must earn a minimum of 120 credit hours. Some majors may require more than 120 hours; check the Academic Catalog for details regarding your chosen program of study.

THE CORE IMPACTS

Core IMPACTS comprises 42 credit hours of general education courses, with learning outcomes and career-ready competencies standardized by the University System of Georgia. Following Core IMPACTS is the Field of Study, an 18 credit-hour block of major specific courses.

Students are classified according to the total number of credit hours earned:

Fr**FRESHMAN**
0-30 hours**So****SOPHOMORE**
31-60 hours**Ju****JUNIOR**
61-90 hours**Se****SENIOR**
91-120+ hours

DECLARE
MAJOR BY
30 HRS

GRADUATION!

**MAJOR
COURSES**
(42+ hrs)



**MINOR
COURSES**
(15-18 hrs)

**BACHELOR'S DEGREE =
120+ CREDIT HOURS**

(CAN BE COMPLETED ON THE CUMMING, DAHLONEGA,
OR GAINESVILLE CAMPUS ONLY)

See Page 43 for the current list of Bachelor's Degree

IMPORTANT TERMS & POLICIES

Enrollment Status

You'll be considered a full-time student if there are at least 12 credit hours on your schedule each semester. You'll be considered a part-time student if your schedule has fewer than 12 credit hours.

Academic Standing

In order to be in "good academic standing," students must maintain a minimum overall GPA of 2.00 or higher after earning 18 or more credit hours. A minimum institutional and overall GPAs of 2.00 is required for graduation for most majors; however, some programs require a higher GPA.

Semester Honors

At the end of each semester, the President's List recognizes students who earned a 4.00 GPA with 12 or more credit hours. The Dean's List recognizes students who earned a 3.50 GPA with 12 or more credit hours and no grade below a B.

Core IMPACTS Rule

Students entering UNG who have earned 30 hours but have not completed all of their Mathematics & Quantitative Skills and Communicating in Writing courses must enroll in the next course(s) necessary to make progress toward completing these areas in every semester in which they take classes.

Course Repeat Policy (Attempted Courses)

If a student repeats a course, only the grade of the most recent attempt of the course is used for the purpose of calculating the overall grade point average and in regards to graduation requirements for all degree/certificate programs. This is the case even if the grade in the most recent attempt is lower than previous attempts. Students may only attempt a course three times at UNG whether a W or grade was assigned to the course (except for ESL courses).

Drop vs. Withdrawal

Students may drop classes by the add/drop deadline each semester and incur no financial obligation. After the add/drop deadline, students may withdraw from classes by the withdrawal deadline (course midpoint). Withdrawal does incur a financial obligation.

View course and degree requirements
online via the UNG Academic Catalog:

ung.edu/catalogs

Your 2-Year Career Plan

YOUR CAREER BEGINS NOW!

Careers take time to develop. If your goal is to walk off campus with meaningful work or admission to another degree program, taking steps early is critical to your success. This two-year plan can help you achieve your dreams.



YEAR ONE: **PREPARE**

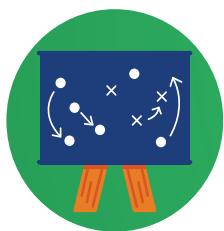


- ☐ Learn about yourself. Take a career assessment like Focus 2 to develop or confirm your career goal.
- ☐ Meet with a Career Specialist to discuss your results and career plans.
- ☐ Join a student organization related to your professional interests. Be an active member.
- ☐ Seek a summer internship.
- ☐ Find and talk with professionals who do the work in which you are interested.

Visit Career Services once per semester to review your progress. Register on Handshake to find internships and part-time jobs.

YEAR TWO: **LAUNCH**

- ☐ Join a professional association related to your field.
- ☐ Write your resume and learn to create cover letters.
- ☐ Create or refresh your LinkedIn profile. Review ALL your social media profiles with an eye toward employment.
- ☐ Learn to interview and visit a career specialist for a mock interview to get feedback.
- ☐ Learn how and where to search for opportunities.



Meet with a Career Specialist to develop an action plan. Take steady steps all year long to graduate with a job or admission to your next academic program.



Career Development is a lifelong process. Prepare and persist on your road to success.

Career Services is here to help!

DAHLONEGA: 706.864.1951

CAREERSERVICES-DAH@UNG.EDU

GAINESVILLE: 678.717.3964

CAREERSERVICES-GVL@UNG.EDU

OCONEE: 706.310.6310

CAREERSERVICES-OCN@UNG.EDU

UNG | UNIVERSITY of
NORTH GEORGIA™
CAREER SERVICES

Your Career & Money Management Plan

YOUR CAREER AND FINANCIAL FITNESS BEGIN NOW!

Careers and financial fitness take time to develop. Your goal is to graduate with meaningful work and the skills to manage your finances. This action plan can help you achieve your dreams.



YEAR ONE: EXPLORE



- ☐ Learn about yourself. Take a career assessment like Focus 2. Meet with Career Specialist to discuss academic and career paths.
- ☐ Schedule a meeting with the Director of Financial Wellbeing to plan head for financial success.
- ☐ Join a student organization related to your career interests. Be an active member.
- ☐ Volunteer in areas related to your career interests.



YEAR TWO: PREPARE

- ☐ Speak with professionals in your field of interest to confirm your choice and begin building a network of connections.
- ☐ Learn to write resumes and get feedback from a Career Specialist. Consider looking for a first internship.
- ☐ Attend 'Building Your Credit' workshop. Consult with Financial professional.
- ☐ Seek a leadership role in a student club.



YEAR THREE: EXPERIENCE

- ☐ Find and complete an internship or career-related part-time job.
- ☐ Join a professional association related to your field. Attend local meetings or conference.
- ☐ Revise your professional materials to include your new experiences.
- ☐ Begin a LinkedIn profile and have it reviewed by a Career Specialist.
- ☐ Attend financial fitness series workshop. Learn how to save and plan finances.



IMPORTANT TIP:

Visit Career Services and the Director of Financial Wellbeing to develop your Career & Financial Fitness Action Plan.



YEAR FOUR: SUCCEED

- ☐ Start early and learn to use multiple job search strategies. Attend a job search workshop or talk with a career specialist.
- ☐ Sharpen interview skills; complete a mock interview with a career specialist.
- ☐ Visit Career Services to enhance your social media presence.
- ☐ Attend a workshop to learn salary negotiation techniques.
- ☐ Attend a Risk Management workshop to learn about insurance and protecting your savings.



DAHLONEGA: 706.864.1951

CAREERSERVICES-DAH@UNG.EDU

GAINESVILLE: 678.717.3964

CAREERSERVICES-GVL@UNG.EDU

OCONEE: 706.310.6310

CAREERSERVICES-OCN@UNG.EDU

UNG | UNIVERSITY of
NORTH GEORGIA™
CAREER SERVICES

ACADEMIC CALENDAR

MAY

- 19 Maymester & 1st Short Session Classes Start
- 20 1st Short Session Add/Drop Ends
- 21 Full Session Add/Drop Ends
- 26 Memorial Day (No Classes)
- 30 Maymester Withdrawal Deadline

JUNE

- 6 1st Short Session Withdrawal Deadline
- 6 Maymester Classes End & Finals
- 19 Juneteenth (No Classes)
- 20 1st Short Session Classes End & Finals
- 23 Second Short Session Classes Begin

JULY

- 3 Full Session Class Withdrawal Deadline
- 4 Independence Day (No Classes)
- 11 2nd Short Session Withdrawal Deadline
- 25 Full & 2nd Session Classes End & Finals

AUGUST

- 11 Full & 1st Half Session Classes Start
- 12 1st Half Session Add/Drop Ends
- 15 Full Session Add/Drop Ends

SEPTEMBER

- 1 Labor Day (No Classes)
- 30 1st Half Session Finals Begin

OCTOBER (Advising Weeks)

- 6 2nd Half Session Classes Begin
- 7 2nd Half Session Add/Drop Ends
- 20 Full Session Classes Withdrawal Deadline

NOVEMBER (Registration Weeks)

- 21 Full and 2nd Half Session Classes End
- 24-28 Fall Break (No Classes)

DECEMBER

- 2-5 Full & 2nd Session Finals

JANUARY

- 12 Full & 1st Half Session Classes Start
- 13 1st Session Add/Drop Ends
- 16 Full Session Add/Drop Ends
- 19 Martin Luther King, Jr. Day (No Classes)

MARCH (Advising Weeks)

- 9-13 Spring Break (No Classes)
- 16 2nd Half Session Classes Start
- 23 Full Session Withdrawal Deadline

APRIL (Registration Weeks)

MAY

- 1 Full & 2nd Session Classes End
- 5-8 Full & 2nd Session Finals

eCore (Summer 2025 and Fall 2025)

- Summer** May 19 First Day of Classes (Summer Session)
- Fall** Aug 18 First Day of Classes (16-wk and 8-wk)
Oct 13 First Day of Classes (8-wk session II)

More: ecore.usg.edu/about/academic-calendar

These dates are subject to change. Please check the online Academic Calendar for the most accurate and up to date information: ung.edu/academics/academic-calendars.

9 TIPS FOR SUCCESS



1

Take time to be informed! As a UNG student, it is your responsibility to keep track of important information and deadlines. Check your university email every day (seriously, do it!); carefully read all your course syllabi; learn how to locate important information on the UNG website; and always read the information signs and event posters posted around your home campus.

2

Create a master schedule at the start of the semester. Carefully review the online academic calendar, as well as each syllabus you receive, and record all the assignments and semester deadlines in your day planner. That way, you'll have a big-picture overview of everything you must complete in the next few months.

3

Get to know your instructors. They want to see you succeed and are here to help. Take time to visit them during office hours and ask questions outside of class. You never know—you might find a mentor or hear about an exciting research opportunity!

4

Ask for the contact information of a few classmates. Odds are good that you'll want to borrow notes or form a study group sometime during the semester. Everyone feels a little awkward on the first day of class, so don't be afraid to break the ice by introducing yourself.

5

Go to class—no joke! Your active participation in class, such as listening, asking questions, and considering important points, will be crucial to your overall understanding of the course material. Be sure to arrive on-time and ready to contribute to discussions and group work.

6

Take notes and review them regularly. Although some instructors provide course outlines or handouts, many do not. That means it will be up to you to create your own study materials. Instead of writing down every word you hear, listen for “verbal signposts” that signal important information. Consider researching the ‘Cornell Note Taking Method’ online if you’re not sure how to start.

7

Establish good time-management and study habits early in the semester. Don't get in the habit of squandering your free time. By regularly reviewing your course information and quizzing yourself, you will minimize forgetting and decrease the need for cramming before tests or project deadlines. (And yes, we know when you've rushed through an assignment.)

8

Be pro-active in asking questions and seeking help. Whether you're dealing with class-related issues or something personal, there is someone at UNG who can assist you. Use the online directory to locate available services or, if you're not sure who to contact, ask an orientation staff person to point you in the right direction. Don't be nervous to reach out; the sooner you alert us to what's going on, the more likely we can help you avoid future problems.

9

Get involved outside of class. Do the fun stuff that makes college so memorable: join clubs, go to campus events and presentations, do research with a professor, play intramural sports, study abroad, etc. It might feel uncomfortable at first, but the more you do, the more you'll learn about yourself and the world around you.

University of North Georgia

Core Plan of Study

Name: ID#: Degree: Catalog: Grad. Semester:

See Second Page for Core IMPACTS

Institutional Priority (7 hrs.)

	Course	Sem.	Hrs.	Grd.
1. Modern Lang.*	<input type="text"/>	<input type="text"/>	4	<input type="text"/>
2. Global	<input type="text"/>	<input type="text"/>	3	<input type="text"/>

*Modern language courses at the 1001 and 1002 level are 4 credit hours.

Mathematics & Quantitative Skills* (3 hrs.)

1. Mathematics	<input type="text"/>	<input type="text"/>	3	<input type="text"/>
----------------	----------------------	----------------------	---	----------------------

*Complete by 30 hours.

Political Science and U.S. History (3 hrs.)

1. Citizenship	<input type="text"/>	<input type="text"/>	3	<input type="text"/>
----------------	----------------------	----------------------	---	----------------------

Arts, Humanities, & Ethics (6 hrs.)

1. Lit. or Lang.	<input type="text"/>	<input type="text"/>	3	<input type="text"/>
2. Fine Arts/Phil.	<input type="text"/>	<input type="text"/>	3	<input type="text"/>

Communicating in Writing* (6 hrs.)

1. English 1101	ENGL 1101	<input type="text"/>	3	<input type="text"/>
2. English 1102	ENGL 1102	<input type="text"/>	3	<input type="text"/>

*A grade of C or higher is required.

*Complete by 30 hours.

Technology, Mathematics, & Sciences (11 hrs.)

1. Lab Science	<input type="text"/>	<input type="text"/>	4	<input type="text"/>	<input type="text"/>
2. Lab Science	<input type="text"/>	<input type="text"/>	4	<input type="text"/>	<input type="text"/>
3. Math & Tech.	<input type="text"/>	<input type="text"/>	3	<input type="text"/>	

Social Sciences (6 hrs.)

1. Behavioral Sci.	<input type="text"/>	<input type="text"/>	3	<input type="text"/>
2. Social Science	<input type="text"/>	<input type="text"/>	3	<input type="text"/>

Graduation Requirements:

- | | |
|---|--|
| <input type="checkbox"/> US History | <input type="checkbox"/> GA History |
| <input type="checkbox"/> US Constitution | <input type="checkbox"/> GA Constitution |
| <input type="checkbox"/> 15 Hours Residency | <input type="checkbox"/> Minimum 60 Core Hours |
| <input type="checkbox"/> Minimum 2.0 Institutional & Cumulative GPA | |

Signatures (original only)

		Date
Student:	<input type="text"/>	<input type="text"/>
Advisor:	<input type="text"/>	<input type="text"/>

Field of Study (18 hrs.)

Course	Sem.	Hrs.	Grds.
<input type="text"/>	<input type="text"/>	3	<input type="text"/>
<input type="text"/>	<input type="text"/>	3	<input type="text"/>
<input type="text"/>	<input type="text"/>	3	<input type="text"/>
<input type="text"/>	<input type="text"/>	3	<input type="text"/>
<input type="text"/>	<input type="text"/>	3	<input type="text"/>
<input type="text"/>	<input type="text"/>	3	<input type="text"/>

Major Specific Information:

Comments:

Grade Legend:

* = In Progress

K = CLEP, AP

I = Incomplete

CR = Military Credit

If you need this document in an alternate format for accessibility purposes (e.g. Braille, large print, audio, etc.), please contact the Academic Advising Center at advising-gvl@ung.edu or 678-717-3791.

UNIVERSITY OF NORTH GEORGIA CORE IMPACTS

Courses may have prerequisites or registration restrictions.
Review course descriptions in the Academic Catalog before registering.
Courses may appear in multiple areas, but cannot be applied to more than one area.

INSTITUTIONAL PRIORITY (7 HOURS)		
MODERN LANGUAGE (3-4 HOURS). CHOOSE ONE:		
Any Non-English Language at the 1001, 1002, 2001, or 2002 Level		3-4
GLOBAL (3-4 HOURS). CHOOSE ONE OR TWO:		
ANTH 1102	Introduction to Anthropology	3
CGLO 1503	Contemporary Global Topics	3
COMM 1503	Intercultural Communication	3
DVRS 1503	Studies in Diversity Issues	3
ENGL 2111	World Literature I	3
ENGL 2112	World Literature II	3
ENGL 2160	Multicultural American Literature	3
ENST 2030	Environmental Studies & Sustainability	3
GEOG 1101	Introduction to Human Geography	3
GEOG 1102	World Regional Geography	3
HIST 1111	World History I	3
HIST 1112	World History II	3
HIST 2860/RELG 2860	History of World Religions	3
INED 2902/2903	Special Topics in International Perspectives	2-3
PHIL 2200	Ethics from a Global Perspective	3
POLS 1153	Global Citizenship	3
POLS 2301	Introduction to Comparative Politics	3
POLS 2401	Global Issues	3
SOCI 1160	Introduction to Social Problems	3
MATHEMATICS & QUANTITATIVE SKILLS (3 HOURS)		
MATHEMATICS (3 HOURS). CHOOSE ONE:		
MATH 1001	Quantitative Skills & Reasoning	3
MATH 1101	Mathematical Models	3
MATH 1111	College Algebra	3
MATH 1113	Pre-Calculus	3
MATH 1450 (1501)	Calculus I (1 hour can be used elsewhere)	4
<i>MATH 1111 or higher required for Nursing majors.</i>		
<i>MATH 1111 recommended for Business majors (required for BBA degrees).</i>		
<i>MATH 1113 or 1450 required for BIOL, CHEM, CSCI, MATH, REP, PHYS majors.</i>		
POLITICAL SCIENCE AND U.S. HISTORY (3 HOURS)		
CITIZENSHIP (3 HOURS). CHOOSE ONE:		
HIST 2111	U.S. History I	3
HIST 2112	U.S. History II	3
POLS 1101	American Government	3
ARTS, HUMANITIES, & ETHICS (6 HOURS)		
LITERATURE OR LANGUAGE (3 HOURS) CHOOSE ONE:		
Any Non-English Language at the 2001 or 2002 Level		3
ENGL 2111	World Literature I	3
ENGL 2112	World Literature II	3
ENGL 2115	Gender and Literature	3
ENGL 2121	British Literature I	3
ENGL 2122	British Literature II	3
ENGL 2131	American Literature I	3
ENGL 2132	American Literature II	3
ENGL 2143	African American Literature	3
ENGL 2145	Native American Literature	3
ENGL 2150/MDST 2150	Literature and Film	3
ENGL 2160	Multicultural American Literature	3
ENGL 2165	Survey of Latina/o U.S. Literature	3
<i>Note: A "C" or better in ENGL 1102 is a prerequisite for ENGL 21XX and MDST 2150.</i>		
FINE ARTS OR PHILOSOPHY (3 HOURS). CHOOSE ONE:		
ART(S) 1100	Art Appreciation	3
ART 2510	Introduction to Art History I	3
ART 2520	Introduction to Art History II	3
COMM 1110	Public Speaking	3
COMM 2050	Media, Culture, and Society	3
MDST 1110	Film Appreciation	3
MUSC 1100	Music Appreciation	3
PHIL 2010	Introduction to Philosophy	3
PHIL 2200	Ethics from a Global Perspective	3
THEA 1100	Theatre Appreciation	3

COMMUNICATING IN WRITING (6 HOURS)		
WRITING (6 HOURS). TAKE BOTH:		
ENGL 1101	English Composition I	3
ENGL 1102	English Composition II	3
<i>Note: A "C" or better is required in both ENGL 1101 & ENGL 1102.</i>		
TECHNOLOGY, MATHEMATICS, & SCIENCES (11 HOURS)		
NURSING MAJORS (8 HOURS). A CHEMISTRY SEQUENCE IS REQUIRED:		
STEM MAJORS (8 HOURS). CHOOSE TWO, IN A SEQUENCE:		
NON-SCIENCE MAJORS (8 HOURS). CHOOSE ANY TWO:		
ASTR 1010/L	Astronomy of the Solar System and Lab	4
ASTR 1020/L	Stellar and Galactic Astronomy and Lab	4
BIOL 1012K	Introduction to Biology II and Lab	4
BIOL 1101K/1011K	Biology: A Human Perspective/Intro. to Biology I and Lab	4
BIOL 1102K	Introduction to Ecology and Lab	4
BIOL 1107K	Principles of Biology I and Lab	4
BIOL 1108K	Principles of Biology II and Lab	4
BIOL 1260K	Environmental Sciences and Lab	4
CHEM 1151/L (1151K)	Survey of Chemistry I and Lab	4
CHEM 1152/L (1152K)	Survey of Chemistry II and Lab	4
CHEM 1211/L (1211K)	Principles of Chemistry I and Lab	4
CHEM 1212/L (1212K)	Principles of Chemistry II and Lab	4
ENVS 2111K	Physical Environmental Science and Lab	4
ENVS 2112K	Environmental Management & Sustainability and Lab	4
GEOG 1111K	Introduction to Physical Geography and Lab	4
GEOG 1112/L	Introduction to Weather & Climate and Lab	4
GEOG/GEOL 1530K	Introduction to Oceanography and Lab	4
GEOL 1101K	Survey of Geology and Lab	4
GEOL 1121K	Physical Geology and Lab	4
GEOL 1122K	Historical Geography and Lab	4
PHYS 1111/L (1111K)	Introductory Physics I and Lab	4
PHYS 1112/L (1112K)	Introductory Physics II and Lab	4
PHYS 2211/L (2211K)	Principles of Physics I and Lab	4
PHYS 2212/L (2212K)	Principles of Physics II and Lab	4
MATHEMATICS AND TECHNOLOGY (3 HOURS). CHOOSE ONE:		
MATH 1113	Pre-Calculus	3
MATH 1401	Elementary Statistics	3
MATH 1450 (1501)	Calculus I (1 hour can be used elsewhere)	4
MATH 2040	Brief Calculus	3
MATH 2460	Calculus II (1 hour can be used elsewhere)	4
MATH 2510	Introduction to Discrete Mathematics	3
CSCI 1250	Information Technologies (non-science majors)	3
CSCI 1301 (1301K)	Computer Science I	4
CSCI 1371	Computing for Scientists and Engineers*	4
DATA 1501	Introduction to Data Science (non-science majors)	3
GISC 2011/L	Geographic Information Science and Lab	3
<i>*Designed for students majoring in Physics or Dual Degree Engineering Programs.</i>		
SOCIAL SCIENCES (6 HOURS)		
BEHAVIORAL SCIENCE (3 HOURS). CHOOSE ONE:		
ANTH 1102	Introduction to Anthropology	3
ECON 2105	Principles of Macroeconomics	3
PSYC 1101	Introduction to Psychology	3
SOCI 1101	Introduction to Sociology	3
SOCIAL SCIENCE (3 HOURS). CHOOSE ONE:		
ENST 2030	Environmental Studies & Sustainability	3
GEOG 1101	Introduction to Human Geography	3
GEOG 1102	World Regional Geography	3
HIST 1111	World History I	3
HIST 1112	World History II	3
HIST 2111	U.S. History I	3
HIST 2112	U.S. History II	3
POLS 1101	American Government	3
POLS 2301	Introduction to Comparative Politics	3
POLS 2401	Global Issues	3
FIELD OF STUDY (18 HOURS)		
COURSES RELATED TO YOUR MAJOR PROGRAM OF STUDY, CHOSEN WITH YOUR ADVISOR.		



SCHEDULING YOUR CLASSES

ENROLLED STUDENTS ARE ASSIGNED A SPECIFIC REGISTRATION DATE AND TIME (A “REGISTRATION TIME TICKET”) ACCORDING TO THE NUMBER OF CREDIT HOURS EARNED, INCLUDING TRANSFER HOURS.

Your registration time-ticket will be assigned approximately two weeks prior to your registration date. It is your responsibility to monitor the UNG website, your student email, and your Banner account to remain apprised of upcoming registration dates. To find your first eligible registration date and time, login to Banner, then choose: Student > New Nighthawk Course Scheduler > Prepare for Registration > (select appropriate term) and click Continue.

NIGHTHAWK REGISTRATION

All course registration happens via Banner:



NEXT SEMESTER'S REGISTRATION DATES

Each semester's registration dates are listed on the Registrar's Office website. You'll be able to review the next semester's list of available courses in Banner about a month prior to the first day of registration, so you should have plenty of time to plan your schedule of classes.

In general, here's when you can expect to schedule courses for future semesters:

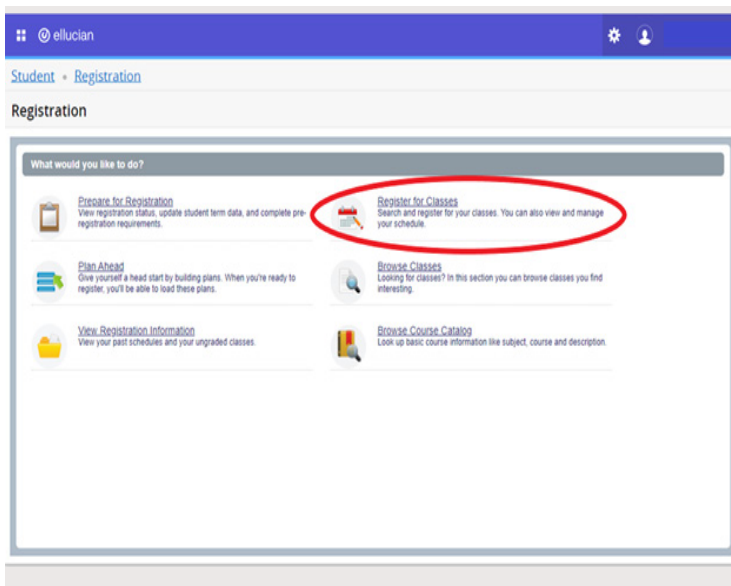
- **Spring Classes:** October
- **Summer Classes:** March, October
- **Fall Classes:** March

FUTURE PRO TIP:

IF YOU WANT TO BENEFIT FROM THE BEST CLASS AVAILABILITY POSSIBLE, IT IS IMPERATIVE THAT YOU REGISTER ON YOUR FIRST AVAILABLE REGISTRATION DAY.

IMPORTANT NOTES

- Students with certain holds will not be permitted to register. It is your responsibility to resolve all holds well in advance of your assigned registration time. Common holds include: incomplete AlcoholEdu and SAPU requirements, Registration Agreement, outstanding parking fines, library late fees, missing immunization records, transcripts, or other documents, etc. To learn more about a student hold visit: <https://ung.edu/registrar/student-holds.php>
- Some students require assisted registration. Students who are not in good academic standing (i.e. Academic Warning, Probation, or Continued Probation), as well as those with Learning Support or Required High School Curriculum requirements, must complete a Course Scheduling Worksheet with an academic or faculty advisor prior to registration.
- Review course pre-requisites prior to class registration. Banner prevents registration for those who do not meet pre-req requirements. Overrides are not permitted unless Registrar's Office staff can confirm that the pre-req is currently in progress. Review the UNG Catalog for complete prerequisite listings for each course: ung.edu/academics/catalogs.



clor	Meeting Times	Campus	Instructional Method	Status	Attribute	Reserved	Linked Sections	Add
un_Cb	S M T W T F S - Type: Clas	U...	Fully at a Dista...	3 of 36 s... 10 of 10	Area A - Math			Add
u_Best	S M T W T F S - Type: Clas	U...	Fully at a Dista...	FUL	Area A - Math			Add
uon_H	S M T W T F S - Type: Clas	U...	Fully at a Dista...	1 of 30 s... 10 of 10	Area A - Math			Add
	S M T W T F S - Type: Clas	e...	Fully at a Dista...	1 of 9 se...	Area A - Math \$0 textbook costs			Add
	S M T W T F S - Type: Clas	e...	Fully at a Dista...	1 of 9 se...	Area A - Math \$0 textbook costs			Add
	S M T W T F S - Type: Clas	e...	Fully at a Dista...	1 of 5 se...	Area A - Math \$0 textbook costs			Add
	S M T W T F S - Type: Clas	e...	Fully at a Dista...	1 of 4 se...	Area A - Math \$0 textbook costs			Add

CHANGING YOUR CLASS SCHEDULE

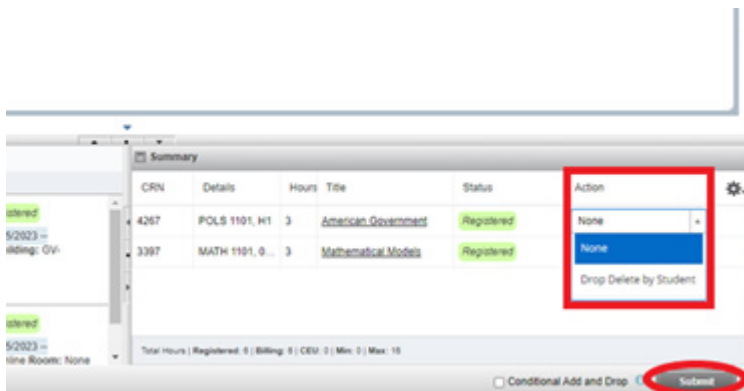
During registration add/drop periods, you have the opportunity to change your schedule without penalty through the first week of classes during each semester. The deadlines can be found on the Academic Calendar: ung.edu/academics/academic-calendars

DROPS VS. WITHDRAWALS

When you remove a class from your schedule during add/drop, it's called a **drop**. The class is completely removed from your academic history and incurs no academic penalty.

If you choose to remove a class from your schedule after the add/drop period has ended, it's called a **withdrawal**. Withdrawals count as attempted hours and are forever represented in your academic history with a grade of W.

Withdrawing from a class after the session midpoint is called **withdraw-failing**. This action results in a grade of WF, which unlike a W, is calculated into your GPA the same as a grade of F.



IMPORTANT: It is your responsibility to check the Academic Calendar and eCore Calendar to determine add/drop and withdrawal deadlines.

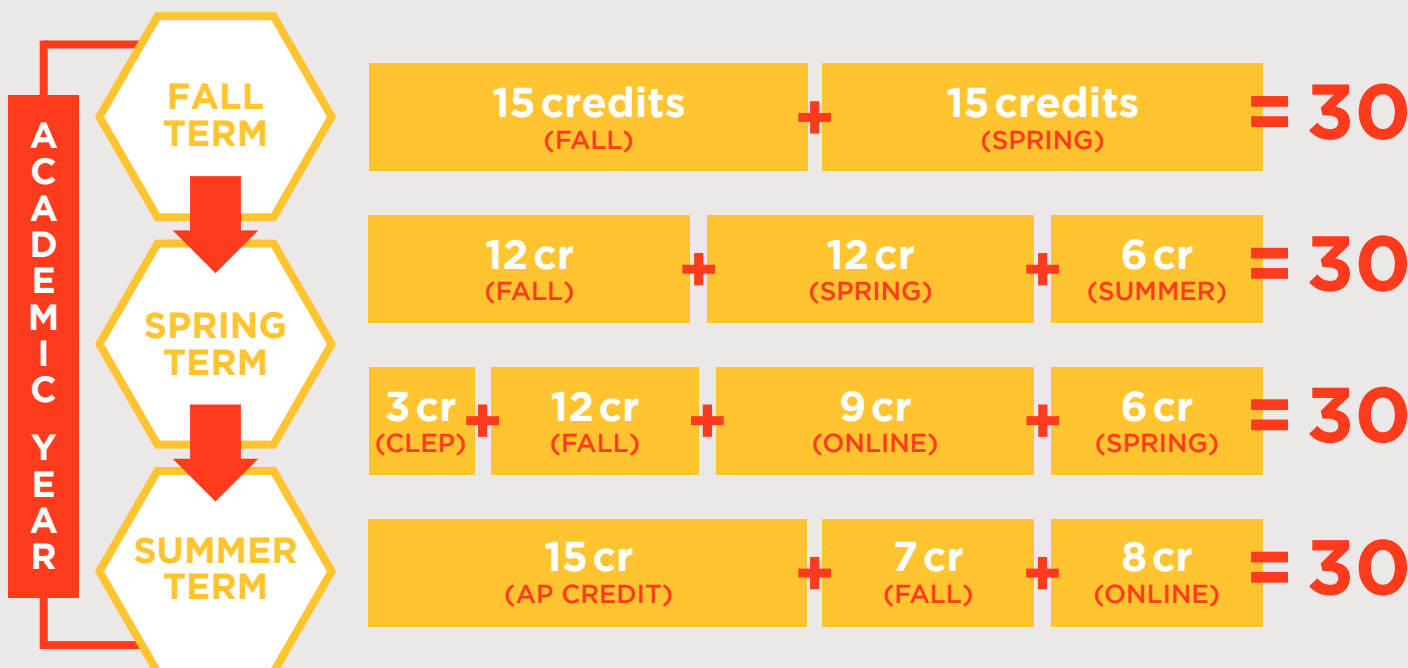
Students who are unable to complete coursework because of a hardship or medical reason should contact the Dean of Students regarding a Hardship Withdrawal.

What are the repercussions of withdrawing from a class?

Withdrawing from a class can delay your progress towards graduation and might even affect your eligibility for financial aid. If you're considering a withdrawal, be sure to speak with your advisor and a financial aid counselor so that you can make the most informed decision possible.

What's Your 30?

Save time and money! The number of credit hours you take each term will determine how long it takes you to graduate. To earn your bachelor's degree within 4 years, or your associate's degree within 2 years, you should complete the equivalent of 15 hours per term for a total of 30 credits annually.



SAMPLE STUDENT WEEK

There are 168 hours per week to manage academics, personal life, and work. Fill out this guide to find out exactly where your time goes and what you would like to accomplish within each week.

Academics Based on 15 credit hours (5 classes)

A. Class time	- 15 Hours
<p><i>Most lecture courses are 3 credit hours. Science courses that include labs and some foreign language courses are 4 credit hours.</i></p> <p>Participation is almost always required and is usually part of the course grade. Students who are not in class cannot participate. Unlike high school, most college professors will not remind students of assignments and exams, as all details are listed on the syllabus.</p>	
B. Homework and study time	- 30 Hours
<p>The rule of thumb is that for each hour spent in class during the week, at least 2 hours should be spent outside of class to keep up with readings, papers, reports, and other homework.</p>	

Personal

A. Eating	- 15 Hours
B. Structured activities	- _____ (varies)
<p>(such as student organizations, gym, church, etc.)</p>	
C. Socializing and time with family and friends	- _____ (varies)
D. Commuting and parking	- _____ (varies)
<p>Students commuting from long distances may spend many hours per week driving, depending on traffic. Don't forget to factor in extra time for parking, too. Although most of our campuses have multiple parking lots, you might spend several minutes searching for a spot.</p>	
E. Sleeping	- 56 Hours
<p>It goes without saying, but getting the right amount of sleep is critical to your ability to learn and retain new information. For both young adults and adults, the recommended amount of sleep averages to 8 hours per night.</p>	

Work

A. Part Time Job	- 15 Hours
<p>Please make sure to take into consideration your own unique responsibilities when it comes to income and budgeting finances. Make sure to formulate the right combination of work and school to accommodate your goals and needs.</p>	

Being a successful college student requires excellent time management skills. As you can see, the sample student week starts with 168 hours, but after deducting time for academics, personal life, and work, the average student only has about five hours per day to spare. It's very important to use your time wisely and establish good habits early in the semester. Use this guide to help you set realistic expectations for what it will take to be a successful UNG student.

**Divided by 7 days
in a week**

**= leaves about 5
hours remaining
per day**

SAMPLE STUDENT SCHEDULE

There are many different ways students manage their time. To make sure you get off to a good start, it will be important to find a technique that works well for you.

	SUNDAY	MONDAY	TUESDAY	WEDNESDAY	THURSDAY	FRIDAY	SATURDAY
7am		commute		commute		commute	
8		ENGL 1101	commute	ENGL 1101	commute	ENGL 1101	
9		study	HIST 2112	study	HIST 2112	study	study
10							
11	lunch	lunch	lunch	lunch	lunch	lunch	lunch
12pm	social	club	study	club	study	work	work
1		POLS 2401		POLS 2401			
2			THEA 1100		THEA 1100		
3	study			gym			
4		commute					
5		dinner	MATH 1111	dinner	MATH 1111		
6	dinner			study		commute	dinner
7		gym	math lab		math lab	dinner	social
8		study	dinner	commute	dinner	social	
9			commute		commute		
10							
11							

As you create your weekly schedule, keep in mind the following advice:

- Note all your class times first, then fill in the remaining blocks of time with your most important tasks.
- Intentionally prioritize study time– block off time before class to prepare and time after class to review new material.
- Use a section of each day to study for upcoming quizzes and tests. Rewriting notes and comparing them to the textbook is a good place to start.
- Schedule daily activities, such as going to the gym, free time, socializing with friends, etc.
- Don't forget to make time for activities, too: clubs and organizations, intramural games, residence hall meetings, athletic events, etc.
- Be sure to leave a little wiggle room in your schedule for things that change week to week, like events and speakers on campus.

DEGREE LEVEL AND CAMPUS CHANGE AT UNG

WHAT IS A DEGREE LEVEL CHANGE OR CAMPUS CHANGE?

- **Degree Level Change:** Changing degrees from associate to bachelor or vice versa
- **Campus Change:** Changing from one home campus to another at UNG

Please Note: Students can make both a degree and campus change at the same time. Degree and campus changes may include a major change. Campus change students who are staying at the same degree level or changing from a Bachelors to Associates do not have specific requirements, but should still meet the deadlines.

COMMON REASONS FOR DEGREE LEVEL CHANGE

- Ready to take 3000-4000 level courses
- Completed an associate pathway and wish to continue on to a bachelor program
- Want to take the majority of your courses on a different UNG campus
- Current home campus doesn't offer complete degree/ major or all courses required to complete degree in a timely manner
- Want to take advantage of a lower tuition rate at the associate degree level
- Housing/ Student Life/ Athletics/ Corps of Cadets

PRIORITY DEADLINE

GENERAL REQUIREMENTS

- Apply by specified deadlines
- Satisfy all Required High School Curriculum deficiencies
- Complete all Learning Support requirements
- Be in good academic standing
- Associate to bachelor students must also meet at least one of the following combinations:
 - A minimum GPA of 2.25 and must have at least 30 credit hours
 - A UNG associate degree with a minimum GPA of 2.00

Meeting these requirements does not guarantee application approval

FOR MORE INFORMATION:
ung.edu/registrar/major-campus-degree-level-change



DEGREE LEVEL CHANGE PROCESS CHECKLIST

1. Meet with your academic advisor to determine if a degree level change or campus change is right for you and when to apply.
2. Check with the Financial Aid office to determine if a transfer will affect your award. Utilize the Tuition and Fee charts to compare the cost difference between degree level and campus fees.
3. Complete the "Change Degree (Level), Major, Minor, and/or Home Campus" application in Banner. You will receive an email notification once your request has been processed, typically within two weeks.
4. If applicable, contact Residence Life to inquire about on-campus housing. (applicable to the Dahlonega campus only)
5. Once your application is approved, schedule an appointment to meet with your new advisor to discuss your program requirements and courses. If not approved, consider an appeal and meet with the Registrar's Office to discuss the next steps.
6. Familiarize yourself with your new degree and/or campus. If you're transferring to Dahlonega or Gainesville, consider attending a personalized campus orientation to help with the transition.
7. Register for classes during your assigned registration time.
8. Begin classes!

UNG Definitions & Acronyms

Academic Calendar: The Academic Calendar is managed by the Registrar's Office and is your best resource for important academic dates and deadlines, such as the first day of classes, holiday breaks, withdrawal deadlines, and registration and advising periods, etc.

Academic Probation: This can be an option for academic standing. If your cumulative grade point average falls below 2.0 (below C average), you will be placed on academic probation. Students on academic probation are required to seek academic advisement with a staff advisor and create an academic success plan before registering for the next semester.

Academic Suspension: This can be an option for academic standing. Students on academic probation who do not earn a 2.0 during their probation period will be placed on academic suspension for two consecutive semesters.

Accreditation: Official recognition that a college, university, or trade school has met the standards of a regional or national association. UNG is accredited by the Southern Association of Colleges and Schools Commission on Colleges (SACS).

Advisement: Advisement helps you determine which courses you should take during the next term and is intended to keep you on track towards graduation. (Why waste time or pay for classes you don't actually need?) UNG devotes 4 weeks to Advising Weeks every fall and spring semester, just before registration opens. Check the Academic Calendar to know when Advising Weeks begin.

Advisor (Academic Advising): Advisors can help you select which classes to take according to your major, help you plan your course schedule, and answer questions about course credits. Each student is assigned a faculty or staff advisor according to major. Each campus has staff academic advisors who can answer general questions about the Core IMPACTS and plan of study requirements.

Adult Learner: Student above the age of 23 or a student with adult responsibilities who is seeking a college degree

Amnesty Policy: The Amnesty Policy applies to a student who seeks medical attention for him/herself or a friend in a possible case of alcohol poisoning or drug overdose. The Amnesty Policy also applies to a student who believes that he or she may have been sexually assaulted while using alcohol or drugs. Amnesty is not available for other behavior covered by the Student Code of Conduct including, but not limited to, assault, theft, driving while impaired, or property damage that may occur as a result of alcohol or drug consumption. A student may only be granted amnesty one time while a UNG student for the consumption of alcohol or drugs. You may seek medical attention for others as often as is necessary and still be eligible to receive amnesty.

Associate Pathways: Awarded by a college or university after satisfactory completion of a two-year program of study. An associate's degree is comprised of the core curriculum and at least 18 credit hours in your major area of concentration.

Bachelor's (or Baccalaureate) Degree: Awarded by a four-year college or university after satisfactory completion of a program of study. A baccalaureate degree consists of a minimum of 120 semester hours, at least 21 of which must be upper division hours in the major field. The degree must have at least 39 semester hours of upper division work overall. Bachelor's Degrees may be started on any campus and can be completed in Cumming, Dahlonega, Gainesville, or Online.

Banner Web (or Banner): Our online student record system which enables you to check your financial aid award status, pay your tuition and fees, request a transcript, change your major, update information such as address and telephone number, and register for courses.

Bursar/Business: The UNG Business Office is responsible for the collection of funds coming into the University of North Georgia. This includes the collection of tuition and fees from students and the collection, receipting and deposit of departmental funds. They are also responsible for the disbursement of student refunds.

Certification of Enrollment: A letter from the Registrar's Office that includes the number of hours in which you are currently enrolled and your academic standing. You may need a certification of enrollment for auto or health insurance purposes. You may request a certification of enrollment via Banner Web at the beginning of each semester, once the drop/add period has ended.

Class Standing (e.g. Freshman, Sophomore, Junior, Senior): Your class standing is determined by the number of credit hours you have successfully completed: Freshman-0-29 hours; Sophomore-30-59 hours; Junior- 60-89 hours; and Senior- 90 < hours.

College-Level Examination Program (CLEP): An exemption test to earn college credits without having to take the class.

Concentration: A major may label a smaller group of courses as a concentration within the major as a way to tailor the major to a student's interest. Concentrations must be pursued and completed concurrently, however, not all majors will have them. They consist of 15 or more credit hours.

Co-Requisite Courses: Courses that must be taken during the same semester. For example, each science class requires that you register for both a lecture and a lab, so they are co-requisite courses.

Core IMPACTS and Field of Study: The set of classes (totaling 60 credit hours) that all students must take in order to complete any associate's or bachelor's degree program at UNG. The core IMPACTS is made up of 42 credit hours, divided into seven basic areas: I- Institutional Priority; M- Mathematics and Quantitative Skills; P- Political Science & U.S. History; A- Humanities, Fine Arts, and Ethics; C- Communicating in Writing; Skills; T- Technology, Mathematics, & Sciences, and S- Social Sciences. The 18 credit hour Field of Study area includes major program of study courses. Although some classes are listed in multiple areas, specific class credit can only be used to satisfy one portion of the core.

Commencement: UNG graduation ceremony. Commencement ceremonies happen spring and fall semesters. Students with 6 or less credit hours to complete for graduation in the summer term may walk in the spring commencement. Those with 6 or more credit hours to complete in the summer term may walk in the following fall.

Counselor: The person on campus who assists you with personal matters such as anxiety, emotional stress, relationship problems, etc. College counseling is the real deal by qualified and licensed mental health professionals. (If you need help determining which classes to take, you need an Advisor.) You can make counseling appointments online, and it's free and confidential for currently enrolled students.

Credit Hour: A credit hour basically represents one hour of class time per week, averaged across the entire term. Most academic courses (such as English, Psychology, History, etc.) are typically worth 3 credit hours; other courses, like the foreign languages or advanced mathematics, are worth 4 credit hours. PE activity classes and science labs are usually worth 1 credit hour. It's important to note that your tuition is charged per credit hour, though there may be additional fees associated with some classes.

CRN (Course Reference Number): Each class has a unique Course Reference Number assigned to it. These numbers are important during registration and when communicating with faculty/staff about a particular section of a class. Pay attention to the CRNs when planning your schedule and registering—it's easy to mistype the number and register for the wrong campus or class time!

Cross-Campus Registration: During the cross-campus registration period Gainesville, Cumming, Blue Ridge, and Oconee students are permitted to cross-register for Gainesville, Cumming, Blue Ridge, and Oconee classes but will not be permitted to register for Dahlonega classes except in specified programs, and Dahlonega students will only be permitted to register for Dahlonega classes in most programs. After this initial cross-campus registration period, students seeking a Bachelor's degree will be permitted to register for courses offered at any campus. For additional guidance, reach out to your advisor during Registration.

Code of Conduct: The university has created a Student Code of Conduct that seeks to protect the safety, rights, and privileges afforded to students and other members of the community. Essential to this purpose, students are expected to be model citizens and their actions and behavior should reflect the core values of the university. Students are expected to adhere to national, state, and local laws; respect the rights and privileges of others; be forthright and honest in all their social and academic conduct; and in general, conduct themselves in a manner which brings credit to themselves and the university.

Desire2Learn (D2L) / eLearning: D2L is our online learning management system. D2L enables instructors to create and manage web-based learning activities and course materials. Login with your UNG network ID and password (the same credentials you use for BannerWeb and student email).

Drop/Add: A period of time at the beginning of each semester (usually one week) in which students can add, delete, and swap the classes on their schedules any number of times without penalty.

Enrollment Term: refers to the semester/term in which you were accepted to the university and began classes.

Final Exams (Finals): Final exams are given after the last week of classes. Generally, individual instructors determine the type of final administered, though some classes follow department-wide guidelines. Final exams are given on specified dates at specific times, which might be different from the regularly scheduled class time. Each class syllabus should include details about your final exam, but the full final exam schedule is also available online via the Registrar's Office website.

Free Application for Federal Student Aid (FAFSA): The UNG Financial Aid office, in association with the U.S. Department of Education, uses the information from this application to determine your eligibility for financial aid, including the Pell Grant, Federal Work-Study, Federal Direct Loans, State Scholarships, State Grants, and some UNG Foundation Scholarships. Students must complete/renew the FAFSA for every academic year they wish to receive aid. (One academic year includes the fall, spring, and summer semesters.) Students are encouraged to complete their application before the priority deadline, for more information on FAFSA please contact the UNG Financial Aid Office.

Full-Time/Part-Time Enrollment: You are enrolled "full-time" if you are taking 12 or more credit hours within a semester. If you're taking 11 or fewer credit hours, you are enrolled only "part-time." Although your personal, family, or work responsibilities might merit part-time enrollment, it's important to recognize that part-time status can affect your eligibility for financial aid and might delay your progress towards graduation. Students who plan to graduate within four years should take 15-17 hours each fall/spring semester, or take summer classes to stay on schedule.

Hold: A hold is placed on a student's academic record when an obligation to the university, whether monetary or material, has not been met. Common holds include: immunization records, final transcripts, outstanding

balances, overdue books, registration agreement, parking tickets, etc. Holds are removed by the issuing department when the obligation has been satisfactorily met. Holds can prevent registration, delay transcript requests, and prevent monetary refunds, so it's important to resolve them as soon as possible.

Inclusive Access: Your professor may have chosen to have their course materials available digitally in D2L on the first day of classes. Charges for these materials will be added to your UNG Student account approximately 1 month before classes start, however you do have the option to opt out in D2L starting on the first day of class if you have chosen to purchase the required materials in another format.

Incomplete Grade: In some situations, an instructor may designate a final course grade as Incomplete (or "I"), rather than assign a failing grade. Incomplete grades are rare and can be assigned only when a student has not completed a major assignment or examination due to extenuating circumstances. All remaining course requirements must be completed within a mutually agreed upon time frame or the "I" grade will be automatically updated to an "F".

Internal Transfer/ Degree Level Change: There are two types of internal transfers: degree level change and campus transfer. Degree level change refers to a student changing from an associate degree to a bachelor's degree or vice versa, and a campus transfer refers to a student changing from one home campus to another at UNG.

Learning Support: The Learning Support Program is a University System of Georgia initiative that enables entering students who are ineligible for admission to the regular college curriculum to develop the basic skills required to enroll in these classes.

Major: Area of focus in a particular field of study. Students usually take the majority of their major-area classes during their junior and senior years at college. The freshman and sophomore years are generally devoted to completing the Core IMPACTS classes that everyone has to take, as well as any pre-requisite classes required for your major (Field of Study).

Minor: An area of study that may only be completed in conjunction with a Bachelor's Degree. Some academic departments may require a minor to be completed in order to obtain a degree, but not all departments require it.

Plan of Study: A plan of study serves as a contract between the school and the student. It is created to help the student understand the steps and classes that need to be taken in order to succeed and graduate with their desired degree.

Prerequisite Course: A course that a student must take and complete prior to registering for another course. (Example: English 1101 is a prerequisite for English 1102.) It is your responsibility to check for prerequisite requirements prior to registration; using the course look-up function in the Academic Catalog is one way to do so.

Title IX: Provides that no person shall, on the basis of sex, be excluded from participation in, be denied benefits, or be subjected to discrimination under any education program or activity receiving federal financial assistance.

Tranguid: Your tranguid is your unofficial transcript at UNG. The tranguid includes your current class schedule, as well as a record of your academic history, major, faculty advisor, and other important information like your address, phone number, and student identification number

Transcript: Your transcript is the official record of your academic work at UNG. It lists all the courses you attempted and the final grades you received, as well as the degree conferred, if any.

Transfer Credits: Credits that come from dual enrollment classes or other colleges that transfer into UNG and count as a class towards the students desired pathway.

Transient Student: A student who is regularly enrolled at one institution and registers to take courses at another institution for one semester and return to their original institution after the semester is over.

University Catalog: Located on ung.edu for students to look through all the classes offered at UNG along with prerequisites and policies.

UNG's Got Your 6 (GY6): A Green Zone is a safe place for student Veterans to meet with UNG Faculty and Staff who are trained advocThis training program equips UNG faculty and staff to support military-connected students. Those who complete the training become strong advocates, helping create a welcoming environment and connecting students to valuable resources. Advocate offices are marked with UNG's Got Your Six (GY6) stickers across all campuses. **Undergraduate:** A college student who is pursuing an associate's or bachelor's degree.

Withdrawal: Students are eligible to withdraw from classes without penalty, as long as their requests are made by the semester withdrawal deadline (midpoint). Withdrawing before the midpoint results in a "W" for the course; withdrawing after the midpoint results in a "WF." Although Ws do not impact GPA, WFs do. Withdraw with caution: Both Ws and WFs count as "attempted hours" and are included in your Satisfactory Academic Progress (SAP) calculation for financial aid. If you have financial aid, please consult with a Financial Aid officer prior to withdrawing to determine if your current award or future eligibility will be affected.

Work-Study: A federally funded program in which students take campus jobs as part of their financial aid package. To participate in a work-study program, students must complete the FAFSA.



ALMA MATER

From the Blue Ridge Mountain foothills
To the banks of Lake Lanier
Memories of our alma mater
That we all revere.

Seeking courage, truth, and wisdom
Fires of loyalty abound
University of North Georgia
From diverse and solid ground.

Standing tall, salute your history
To the blue and gold we rise
Look beyond the distant sunset
See the future in our eyes.

To our school, we bring you glory
May we always honor thee
Keeping memories deep within us
And our love for UNG.

Written by Nancy Hanson (2013)
Music by Joe Chapman

DIRECTORY

B - Blue Ridge

C - Cumming

D - Dahlongega

G - Gainesville

O - Oconee

ACADEMIC ADVISING

<http://ung.edu/academic-advising>

B, D	706-864-1402	advising-dah@ung.edu
C	470-239-3020	advising-cmg@ung.edu
G	678-717-3791	advising-gvl@ung.edu
O	706-310-6365	advising-ocn@ung.edu

BOOKSTORE

<https://ung.bncollege.com>

B, C, D	706-864-1635	sm8434@bncollege.com
G	678-717-3636	sm8435@bncollege.com
O	706-310-6210	sm8436@bccollege.com

BUSINESS OFFICE (BURSAR)

<http://ung.edu/business-office>

B, D	706-864-1409	business.office@ung.edu
G, C, O	678-717-3780	business.office@ung.edu

CARD SERVICES

<http://ung.edu/ung-card-office>

B	706-946-5460	card-dah@ung.edu
C	470-239-3132	card-dah@ung.edu
D	706-864-1404	card-dah@ung.edu
G	678-717-3914	card-gvl@ung.edu
O	706-310-6336	ungauxocn@ung.edu

CAREER SERVICES

<http://ung.edu/career-services>

D, B	706-864-1951	careerservices-dah@ung.edu
G, C	678-717-3964	careerservices-gvl@ung.edu
O	706-310-6310	careerservices-ocn@ung.edu

CENTER FOR UNDERGRADUATE RESEARCH AND CREATIVE ACTIVITIES (CURCA)

<http://ung.edu/curca>

D, G	706-867-3013	curca@ung.edu
------	--------------	---------------

DEAN OF STUDENTS

<http://ung.edu/dean-of-students>

B, D	706-864-1900	DoS@ung.edu
------	--------------	-------------



Schedule a time for everything that way you know what your day looks like, but don't forget to set aside time to have fun!

COLIN M.
JOURNALISM



C, G	678-717-3877	DoS@ung.edu
O	706-310-6205	DoS@ung.edu

DINING SERVICES

<http://ung.edu/dining-services>

D	706-864-1770	dining-dah@ung.edu
G	678-717-3626	dining-gvl@ung.edu

DISTANCE EDUCATION & TECHNOLOGY INTEGRATION AND Ecore

<http://ung.edu/deti>, <http://ung.edu/ecore>

DETI	706-867-2520	deti@ung.edu
ECore	706-867-4474	ecore@ung.edu

ENROLLMENT MANAGEMENT

<http://ung.edu/enrollment>

All	706-867-2572	enrollment@ung.edu
-----	--------------	--------------------

FINANCIAL AID

<http://ung.edu/financial-aid>

All	706-864-1412	fnaid@ung.edu
-----	--------------	---------------

FRATERNITY & SORORITY LIFE

<http://ung.edu/fraternity-sorority-life>

All	706-867-2750	fsl@ung.edu
-----	--------------	-------------

DEGREE LEVEL CHANGE

<http://ung.edu/registrar/major-campus-degree-level-change>

All		degreecampusmajor@ung.edu
-----	--	---------------------------

IT SERVICE DESK

<http://ung.edu/information-technology>

C, G, O	678-717-3555	helpdesk@ung.edu
D, B	706-864-1922	helpdesk@ung.edu

MILITARY CLOTHING & SALES

<http://ungbookstore.com>

D	706-864-1537	elisha.blackford@ung.edu
---	--------------	--------------------------

NATIONAL INSTITUTE FOR THE STUDY OF TRANSFER STUDENTS

<http://nists.org>

All	706-864-1579	nists@ung.edu
-----	--------------	---------------

PARKING SERVICES

<http://ung.edu/parking-transportation>

B, C, D	706-864-1697	parking.services@ung.edu
G	678-717-3914	parking.services@ung.edu
O	706-310-6264	ungauxocn@ung.edu



Get involved! Building community helps you get acclimated to campus and gives you a support system in and out of classroom!

RYLEE W.
HEALTHCARE
INFORMATICS



RECREATION AND WELLNESS

<https://ung.edu/campus-recreation-and-wellness>

D	706-864-1458	CRW@ung.edu
G	678-717-3485	CRW-GVL@ung.edu

REGISTRAR

<http://ung.edu/registrar>

B	706-946-5462	registrar-blu@ung.edu
C	470-239-3105	registrar-cmg@ung.edu
D	706-864-1760	registrar-dah@ung.edu
G	678-717-3644	registrar-gvl@ung.edu
O	706-310-6226	registrar-ocn@ung.edu

RESIDENCE LIFE

<http://ung.edu/residence-life>

D	706-864-1902	residencelife@ung.edu
---	--------------	-----------------------

STUDENT COUNSELING

<http://ung.edu/student-counseling>

B, D	706-867-4402	ext. 1
C	706-867-4402	ext. 4
G	706-867-4402	ext. 2

STUDENT ACCESSIBILITY SERVICES

<http://ung.edu/student-accessibility-services>

B	706-946-5460	accessibility-blu@ung.edu
C	470-239-3137	accessibility-cmg@ung.edu
D	706-867-2782	accessibility-dah@ung.edu
G	678-717-3855	accessibility-gvl@ung.edu
O	706-310-6204	accessibility-ocn@ung.edu

STUDENT ENGAGEMENT & LEADERSHIP

<http://ung.edu/student-involvement>

D	706-864-1643	involvement@ung.edu
G	678-717-3622	involvement@ung.edu
O	706-310-6250	involvement@ung.edu

STUDENT ORIENTATION & SUCCESS

<http://ung.edu/sos>

All	706-864-1010	sos@ung.edu
-----	--------------	-------------

STUDY ABROAD (CENTER FOR GLOBAL ENGAGEMENT)

<http://ung.edu/global-engagement>

All	706-867-2858	global@ung.edu
-----	--------------	----------------

SUPPLEMENTAL INSTRUCTION

“

It's okay to ask for help and not have everything figured out. Use the resources you have here at UNG and you will succeed.

KYRA P.
CRIMINAL JUSTICE

”

<http://ung.edu/supplemental-instruction>

C, D, O		SI@ung.edu
---------	--	------------

G	678-717-3476	SI@ung.edu
---	--------------	------------

TESTING

<http://ung.edu/testing>

B	706-946-5460	testing-blu@ung.edu
---	--------------	---------------------

D	706-864-1799	testing-dah@ung.edu
---	--------------	---------------------

G	678-717-3863	testing-gvl@ung.edu
---	--------------	---------------------

TUTORING SERVICES

<http://ung.edu/tutoring-services>

B	706-946-5465	tutoringservices@ung.edu
---	--------------	--------------------------

C	470-239-3036	tutoringservices@ung.edu
---	--------------	--------------------------

D	706-864-1433	tutoringservices@ung.edu
---	--------------	--------------------------

G	678-717-3766	tutoringservices@ung.edu
---	--------------	--------------------------

O	706-310-6294	tutoringservices@ung.edu
---	--------------	--------------------------

VETERAN-MILITARY CONNECTED & ADULT LEARNER PROGRAMS

<http://ung.edu/student-orientation-success/veterans-military>

All	706-864-1010	sos@ung.edu
-----	--------------	-------------

WE ARE HERE TO HELP YOU!

Don't hesitate to contact us if you have questions or need assistance.



Be sure to always check your UNG Email! You don't want to miss anything important!

LUIS H.
FINANCE



This image shows a full page of white paper with horizontal grey ruling lines. The lines are evenly spaced and run across the width of the page. There is a solid yellow header bar at the top edge. The paper appears to be from a notebook or a standard writing template.

This image shows a full page of blank, lined paper. It features approximately 20 evenly spaced, light gray horizontal lines running across the width of the page. The lines are uniform in thickness and spacing, providing a guide for handwriting or typing. There are no margins, text, or other markings present on the page.



BLUE RIDGE

56 Nighthawk Dr.
Blue Ridge, GA 30513
706-946-5460

CUMMING

300 Aquatic Circle
Cumming, GA 30040
470-239-3102

DAHLONEGA

82 College Circle
Dahlonega, GA 30597
706-864-1400

GAINESVILLE

3820 Mundy Mill Rd.
Oakwood, GA 30566
678-717-3639

OCONEE

1201 Bishop Farms Pkwy.
Watkinsville, GA 30677
706-310-6201



Follow us on social media. Find UNG, including various academic and campus offices in the Social Media Directory:
ung.edu/social-media